

elite



ADAMA JOBE

5'11" 1/2 B 34" 1/2 W 24" 1/2 H 36" 1/2 S 9 1/2 HAIR BLACK EYES BROWN

elite



ADAMA JOBE

5'11" 1/2 B 34" 1/2 W 24" 1/2 H 36" 1/2 S 9 1/2 HAIR BLACK EYES BROWN

elite



ADAMA JOBE

5'11" 1/2 B 34" 1/2 W 24" 1/2 H 36" 1/2 S 9 1/2 HAIR BLACK EYES BROWN

elite



ADAMA JOBE

5'11" 1/2 B 34" 1/2 W 24" 1/2 H 36" 1/2 S 9 1/2 HAIR BLACK EYES BROWN

elite



ADAMA JOBE

5'11" 1/2 B 34" 1/2 W 24" 1/2 H 36" 1/2 S 9 1/2 HAIR BLACK EYES BROWN

elite



ADAMA JOBE

5'11" 1/2 B 34" 1/2 W 24" 1/2 H 36" 1/2 S 9 1/2 HAIR BLACK EYES BROWN

elite



ADAMA JOBE

5'11" 1/2 B 34" 1/2 W 24" 1/2 H 36" 1/2 S 9 1/2 HAIR BLACK EYES BROWN

elite



ADAMA JOBE

5'11" 1/2 B 34" 1/2 W 24" 1/2 H 36" 1/2 S 9 1/2 HAIR BLACK EYES BROWN

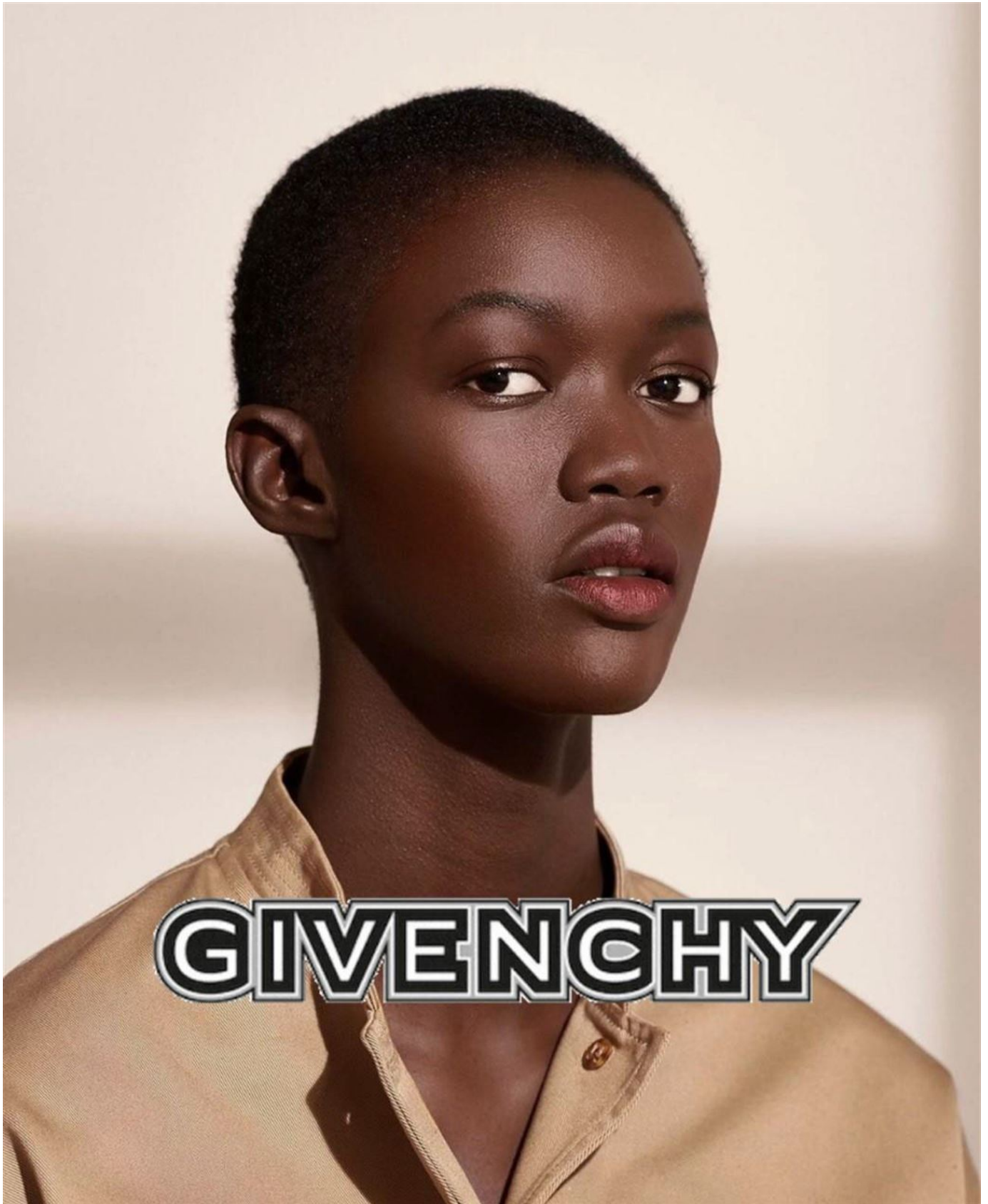
elite



ADAMA JOBE

5'11" 1/2 B 34" 1/2 W 24" 1/2 H 36" 1/2 S 9 1/2 HAIR BLACK EYES BROWN

elite



ADAMA JOBE

5'11" 1/2 B 34" 1/2 W 24" 1/2 H 36" 1/2 S 9 1/2 HAIR BLACK EYES BROWN

elite



ADAMA JOBE

5'11" 1/2 B 34" 1/2 W 24" 1/2 H 36" 1/2 S 9 1/2 HAIR BLACK EYES BROWN

elite



ADAMA JOBE

5'11" 1/2 B 34" 1/2 W 24" 1/2 H 36" 1/2 S 9 1/2 HAIR BLACK EYES BROWN

elite



ADAMA JOBE

5'11" 1/2 B 34" 1/2 W 24" 1/2 H 36" 1/2 S 9 1/2 HAIR BLACK EYES BROWN

elite



ADAMA JOBE

5'11" 1/2 B 34" 1/2 W 24" 1/2 H 36" 1/2 S 9 1/2 HAIR BLACK EYES BROWN

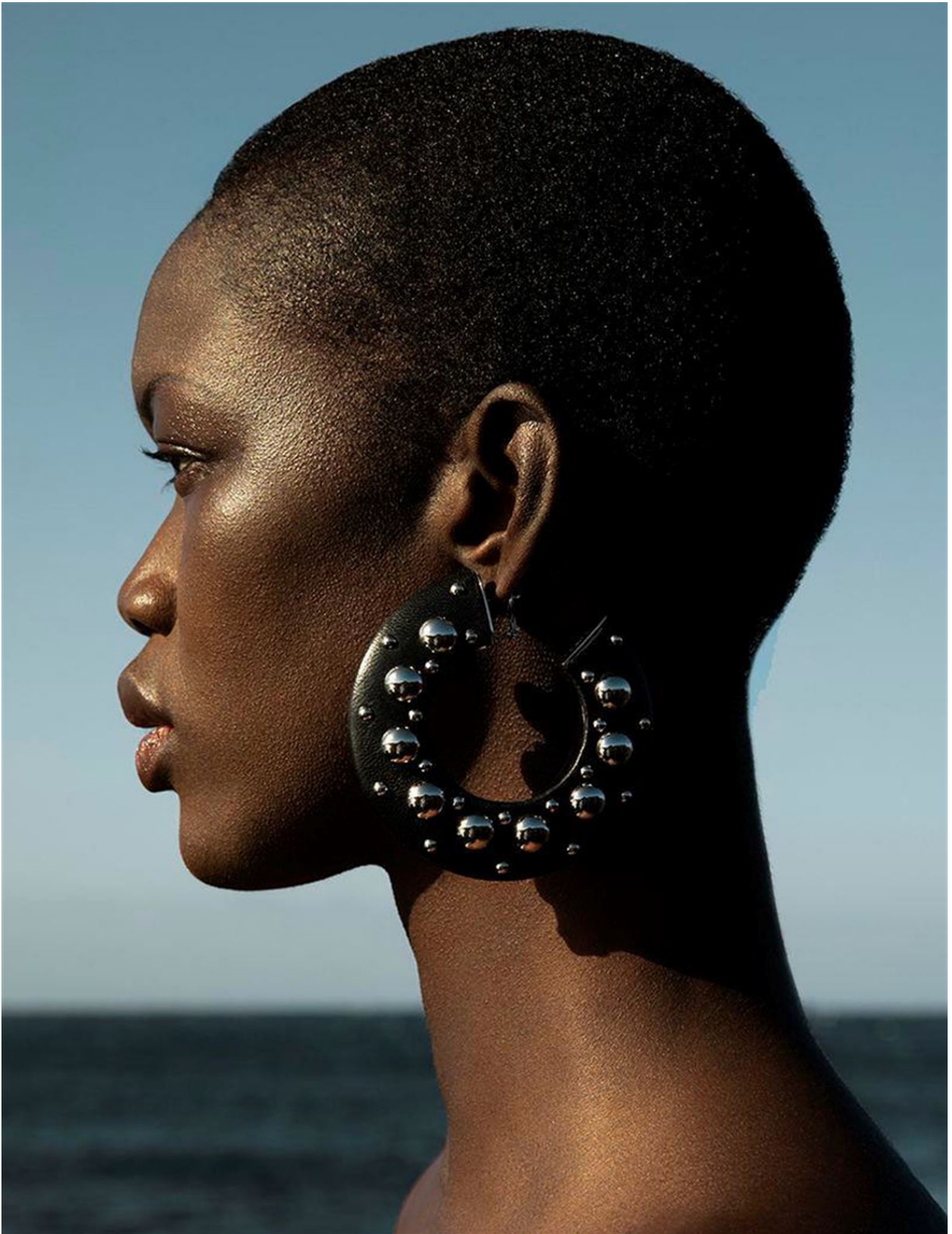
elite



ADAMA JOBE

5'11" 1/2 B 34" 1/2 W 24" 1/2 H 36" 1/2 S 9 1/2 HAIR BLACK EYES BROWN

elite



ADAMA JOBE

5'11" 1/2 B 34" 1/2 W 24" 1/2 H 36" 1/2 S 9 1/2 HAIR BLACK EYES BROWN

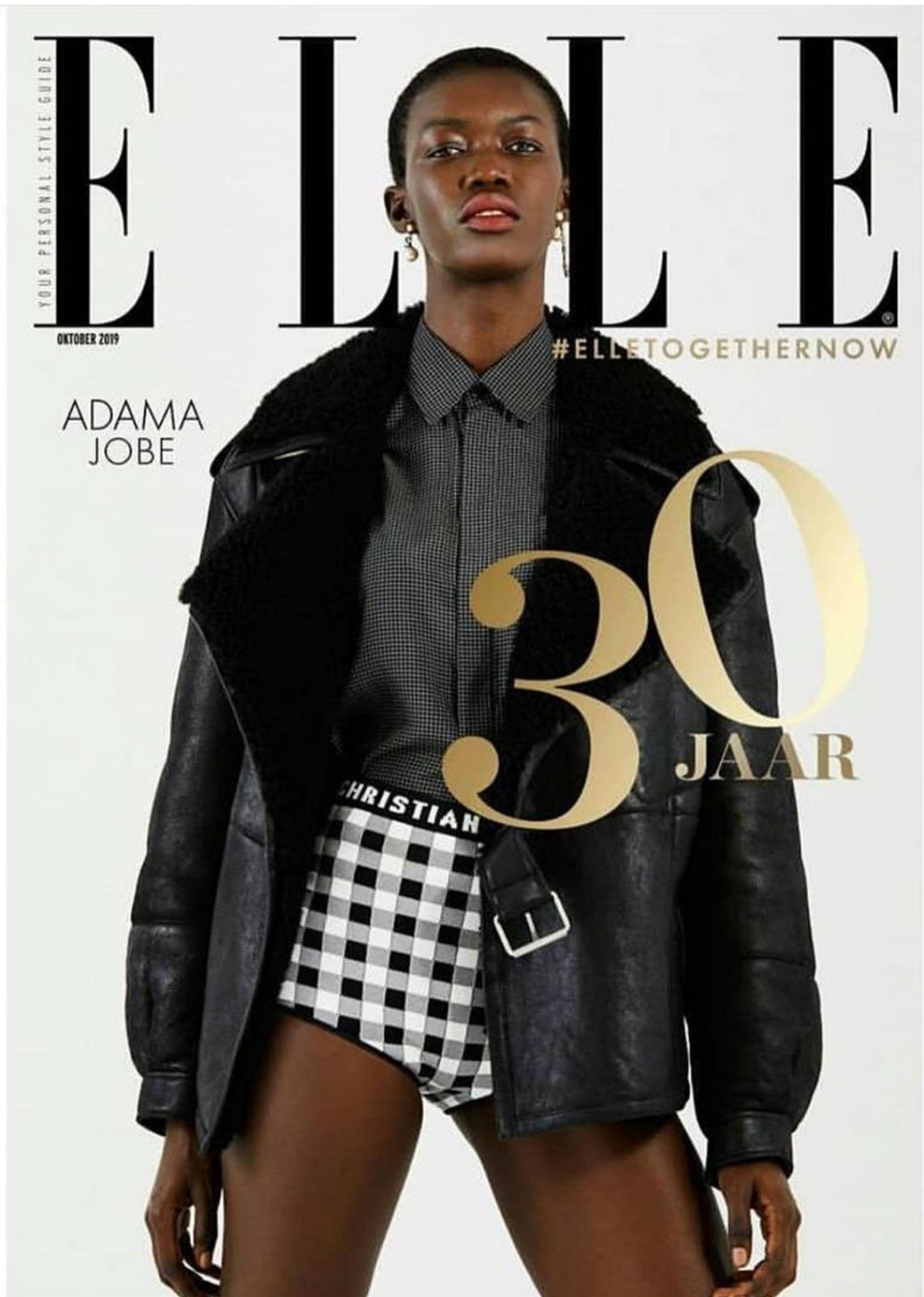
elite



ADAMA JOBE

5'11" 1/2 B 34" 1/2 W 24" 1/2 H 36" 1/2 S 9 1/2 HAIR BLACK EYES BROWN

elite



ADAMA JOBE

5'11" 1/2 B 34" 1/2 W 24" 1/2 H 36" 1/2 S 9 1/2 HAIR BLACK EYES BROWN

elite



ŐSZRE VÁLASZTHATUNK VIRÁGOK
HELYETT ABSZTRAKT MINTÁKAT,
MELEG SZÍNEKBEN, MAXIRUHÁN
LELEGZETELÁLLÍTÓAN MŰTATNAK.
Ruha, MARINA RINALDI

ADAMA JOBE

5'11" 1/2 B 34" 1/2 W 24" 1/2 H 36" 1/2 S 9 1/2 HAIR BLACK EYES BROWN

elite



ADAMA JOBE

5'11" 1/2 B 34" 1/2 W 24" 1/2 H 36" 1/2 S 9 1/2 HAIR BLACK EYES BROWN

elite



RODE JAS FRENKEN, GROENE
JAS LIU JO, TOP EN LEGGING
ELISABETTA FRANCHI,
SCHOENEN DR. MARTENS,
SOKKEN ADIDAS, SJAAL,
HANDSCHOENEN EN RIEM
VAN STYLIST.

ADAMA JOBE

5'11" 1/2 B 34" 1/2 W 24" 1/2 H 36" 1/2 S 9 1/2 HAIR BLACK EYES BROWN

elite



JAS PATRIZIA
PEPE, TRUI
ELISABETTA
FRANCHI,
ZONNEBRIIL
BALENCIAGA.

MAKE-UP: RAURAGHOSING@COLOURFOOL.AGENCY (COLOURFOOL.AGENCY.NL) | MODEL: ADAMA@MODELSROCK (MODELSROCK.AGENCY.COM) | ASS. MO:DE BRITNEY CHANDREPERKASH@BRITNEYCHANDREPERKASH

GRAZIA 63

ADAMA JOBE

5'11" 1/2 B 34" 1/2 W 24" 1/2 H 36" 1/2 S 9 1/2 HAIR BLACK EYES BROWN

elite



ADAMA JOBE

5'11" 1/2 B 34" 1/2 W 24" 1/2 H 36" 1/2 S 9 1/2 HAIR BLACK EYES BROWN

elite



ADAMA JOBE

5'11" 1/2 B 34" 1/2 W 24" 1/2 H 36" 1/2 S 9 1/2 HAIR BLACK EYES BROWN

elite



ADAMA JOBE

5'11" 1/2 B 34" 1/2 W 24" 1/2 H 36" 1/2 S 9 1/2 HAIR BLACK EYES BROWN

elite



ADAMA JOBE

5'11" 1/2 B 34" 1/2 W 24" 1/2 H 36" 1/2 S 9 1/2 HAIR BLACK EYES BROWN

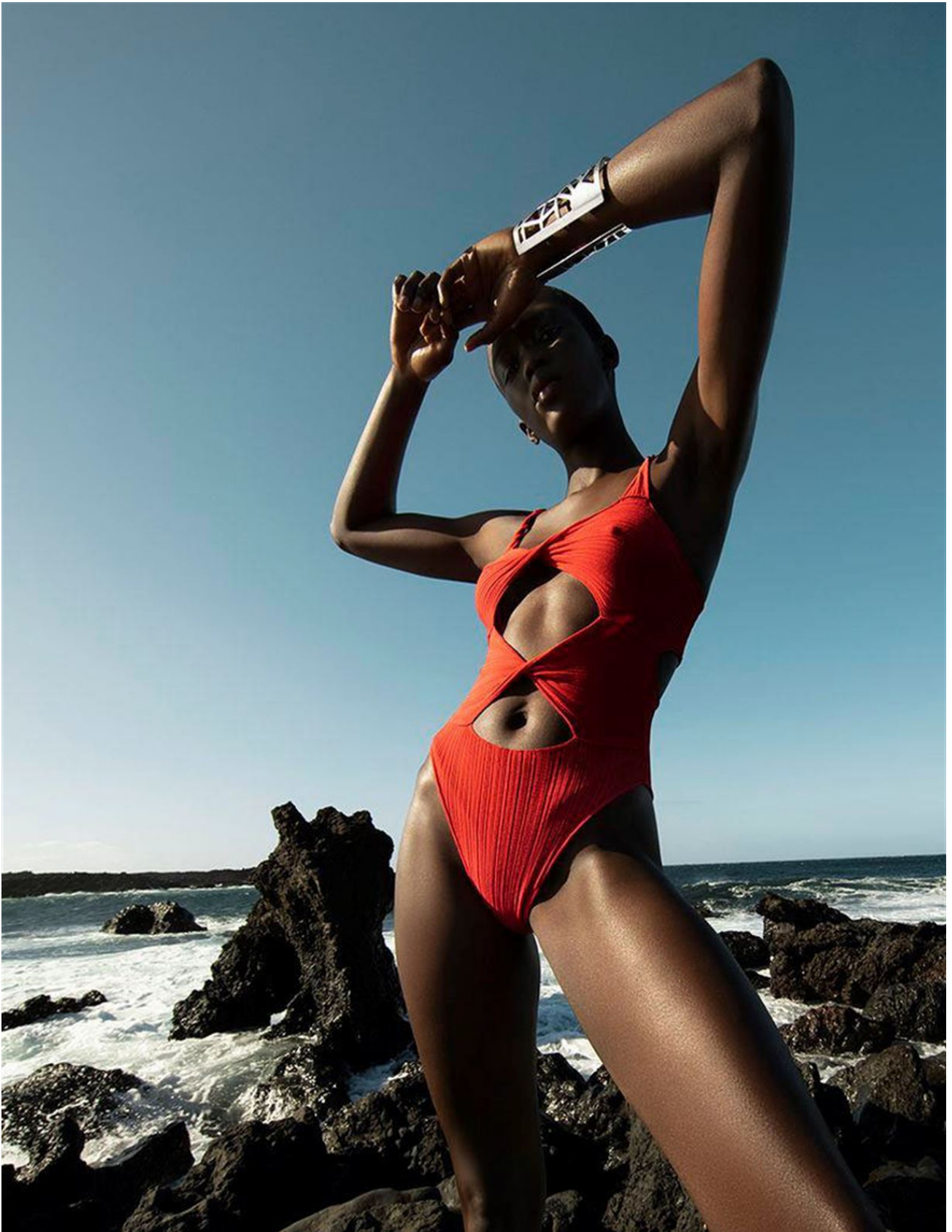
elite



ADAMA JOBE

5'11" 1/2 B 34" 1/2 W 24" 1/2 H 36" 1/2 S 9 1/2 HAIR BLACK EYES BROWN

elite



ADAMA JOBE

5'11" 1/2 B 34" 1/2 W 24" 1/2 H 36" 1/2 S 9 1/2 HAIR BLACK EYES BROWN

elite



ADAMA JOBE

5'11" 1/2 B 34" 1/2 W 24" 1/2 H 36" 1/2 S 9 1/2 HAIR BLACK EYES BROWN

elite



ADAMA JOBE

5'11" 1/2 B 34" 1/2 W 24" 1/2 H 36" 1/2 S 9 1/2 HAIR BLACK EYES BROWN

JAS BENCHELLAL, TOP LA PERLA, SHORTS MOSCHINO, LAARZEN JEFFREY CAMPBELL, OORBEL ISABEL MARANT.

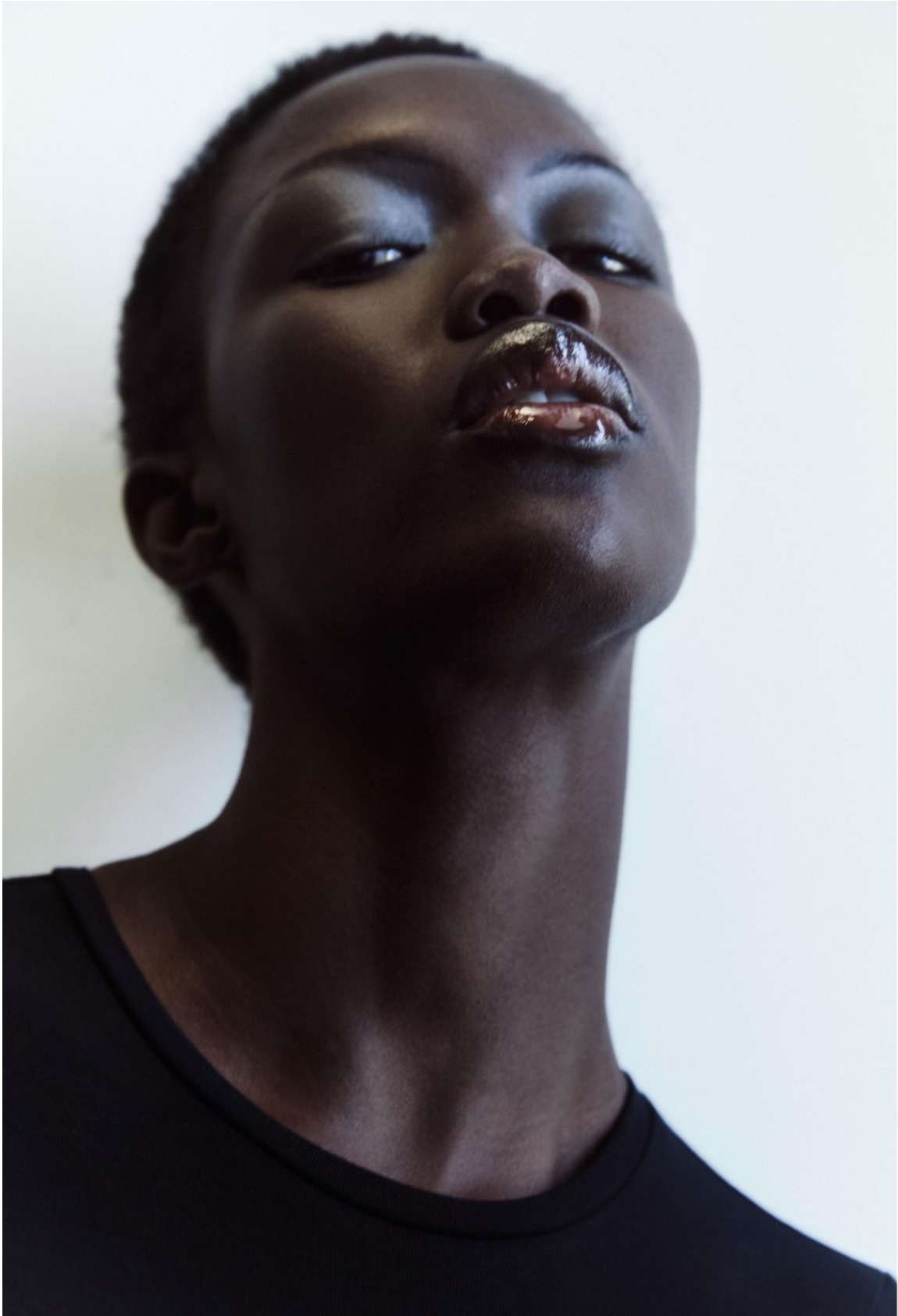


MAKE UP: IRAJ PRAKHOSING @ COLOURFOOL AGENCY WWW.COLOURFOOL.AGENCY.NL MODEL: ADAMA @ MODELSPOCK
WWW.MODELSPOCK.AGENCY.COM ASSISTANT STYLING: BRITNEY CHANDRERKASH @ BRITNEYCHANDRERKASH

ADAMA JOBE

5'11" 1/2 B 34" 1/2 W 24" 1/2 H 36" 1/2 S 9 1/2 HAIR BLACK EYES BROWN

elite



ADAMA JOBE

5'11" 1/2 B 34" 1/2 W 24" 1/2 H 36" 1/2 S 9 1/2 HAIR BLACK EYES BROWN

elite



LINKE SEITE: Collier „Pures Glück“ aus Gelbgold mit Brillant-W, von WELLENDORFF, P. a. A. Minikleid aus Viskose-Strick, von TOD'S, um 1100 €. DIESE SEITE: Manschettenarmreif „Coco Crush“ aus Gelbgold, von CHANEL, P. a. A. V-Neck-Pullover aus Schurwolle und Cashmere, von ODEEH, um 500 €. Hose aus Denim-Leinen-Mix, von EMPORIO ARMANI, um 430 €. Model: Adama Jobe/Modellwerk. Make-up: Kristina Kullenberg/LundLund. Haare: Philip Fohlin/Linkdetails. Stylingassistentz: Tinka Valérie Knoll. Produktion: DAY Stockholm

ADAMA JOBE

5'11" 1/2 B 34" 1/2 W 24" 1/2 H 36" 1/2 S 9 1/2 HAIR BLACK EYES BROWN

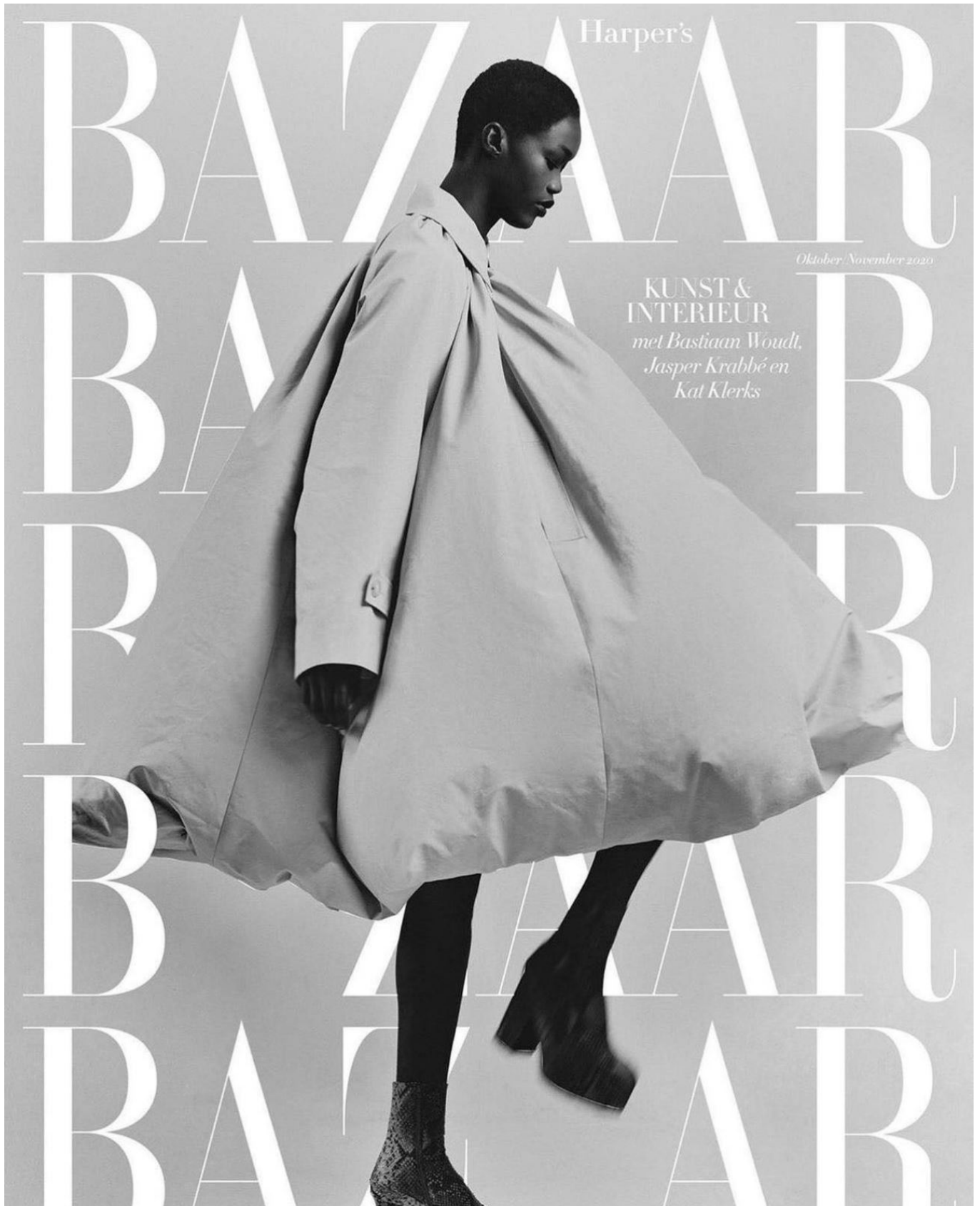
elite



ADAMA JOBE

5'11" 1/2 B 34" 1/2 W 24" 1/2 H 36" 1/2 S 9 1/2 HAIR BLACK EYES BROWN

elite



ADAMA JOBE

5'11" 1/2 B 34" 1/2 W 24" 1/2 H 36" 1/2 S 9 1/2 HAIR BLACK EYES BROWN

elite



FOTOGRAFIE PHILIPPE VOUELENSZANS, STYLING SIMONE SHERERS, MOODE ADAMA JOBE, HAAR EN MAKE-UP NICOLÉ PHILIPPO, FOTOGRAFIE ASSISTENTEN VINCENT HOUTMAN, JOHANNICERIS EN DEBORAH DEMY, MAKE-UP ASSISTENT CANDIE TREIBEL, PRODUCTIE RACHEL VAN VAS, MET DANK AAN ALLARD STROOFT

*Vlinderhoed van
kant en staal, p.a.
Mirjam Narver, jurk
met veren, € 1500
Taller Marmo*

ADAMA JOBE

5'11" 1/2 B 34" 1/2 W 24" 1/2 H 36" 1/2 S 9 1/2 HAIR BLACK EYES BROWN

elite



ADAMA JOBE

5'11" 1/2 B 34" 1/2 W 24" 1/2 H 36" 1/2 S 9 1/2 HAIR BLACK EYES BROWN

elite

VOGUE



ADAMA JOBE

5'11" 1/2 B 34" 1/2 W 24" 1/2 H 36" 1/2 S 9 1/2 HAIR BLACK EYES BROWN