

elite



ADAMA JOBE

5'11" 1/2 B 34" 1/2 W 24" 1/2 H 36" 1/2 S 9 1/2 HAIR BLACK EYES BROWN

elite



ADAMA JOBE

5'11" 1/2 B 34" 1/2 W 24" 1/2 H 36" 1/2 S 9 1/2 HAIR BLACK EYES BROWN

elite



ADAMA JOBE

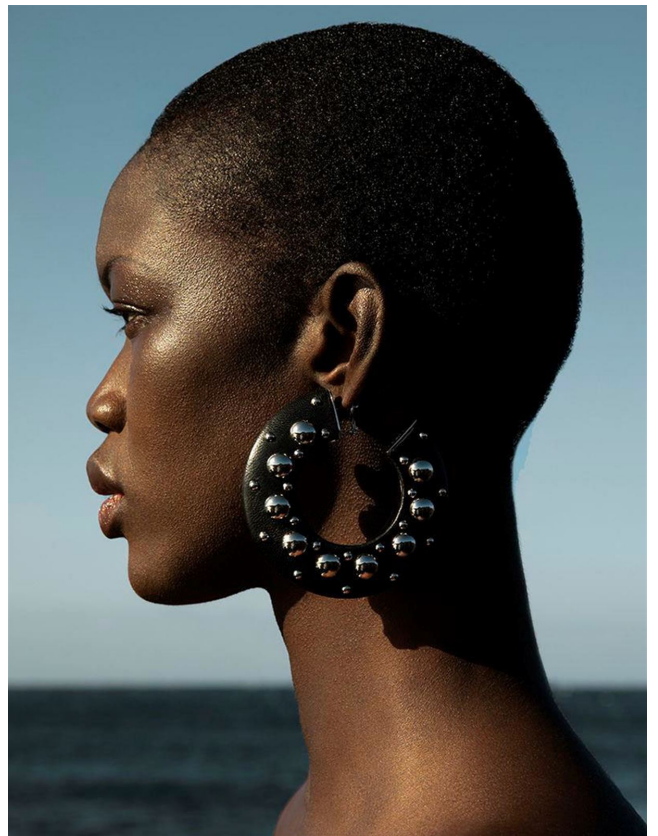
5'11" 1/2 B 34" 1/2 W 24" 1/2 H 36" 1/2 S 9 1/2 HAIR BLACK EYES BROWN

elite



ADAMA JOBE

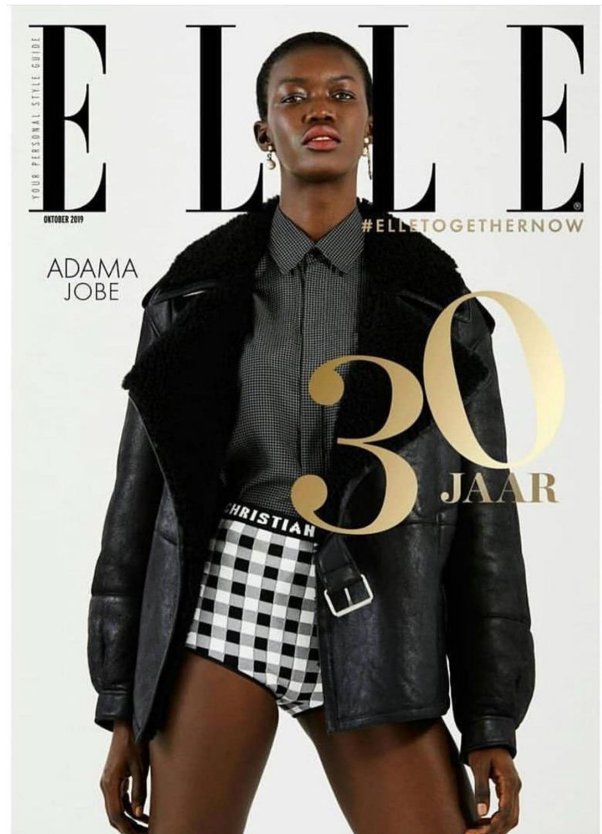
5'11" 1/2 B 34" 1/2 W 24" 1/2 H 36" 1/2 S 9 1/2 HAIR BLACK EYES BROWN



ADAMA JOBE

5'11" 1/2 B 34" 1/2 W 24" 1/2 H 36" 1/2 S 9 1/2 HAIR BLACK EYES BROWN

elite



ADAMA JOBE

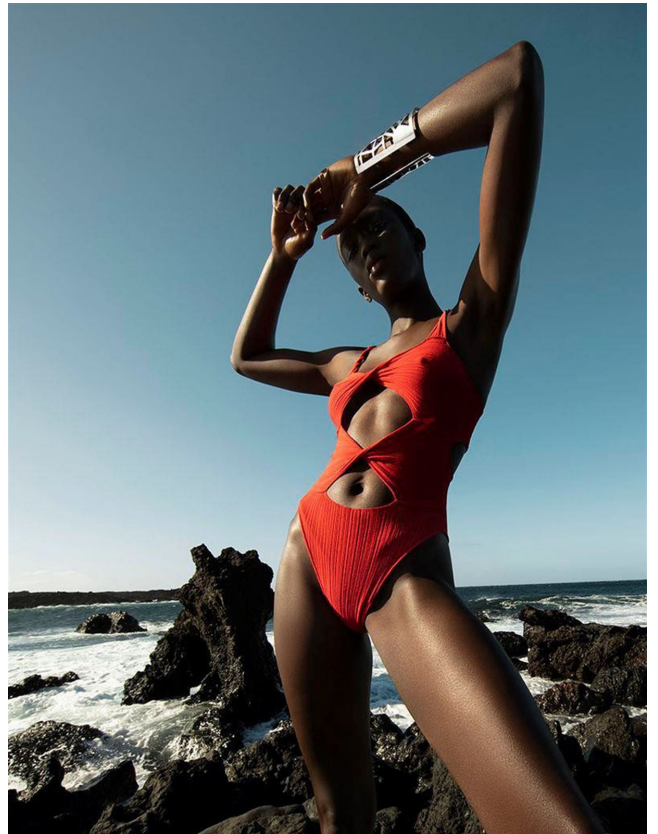
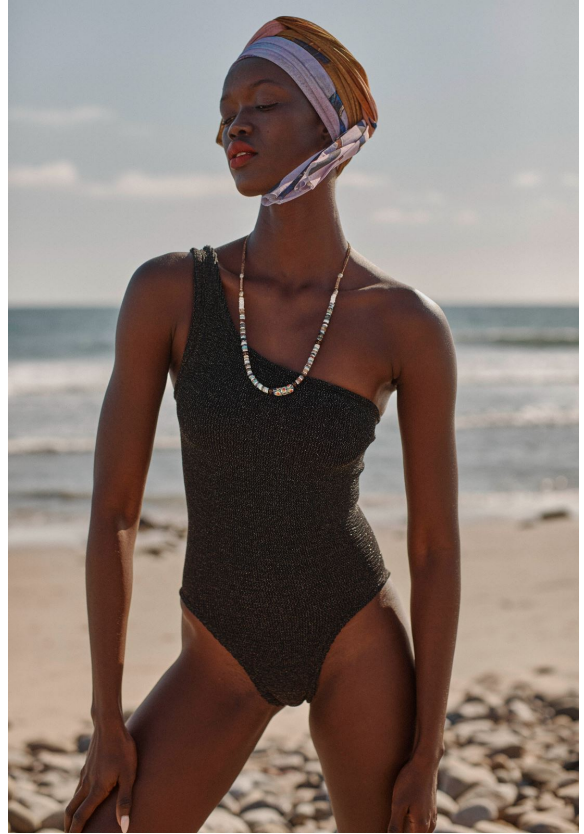
5'11" 1/2 B 34" 1/2 W 24" 1/2 H 36" 1/2 S 9 1/2 HAIR BLACK EYES BROWN



ADAMA JOBE

5'11" 1/2 B 34" 1/2 W 24" 1/2 H 36" 1/2 S 9 1/2 HAIR BLACK EYES BROWN

elite



ADAMA JOBE

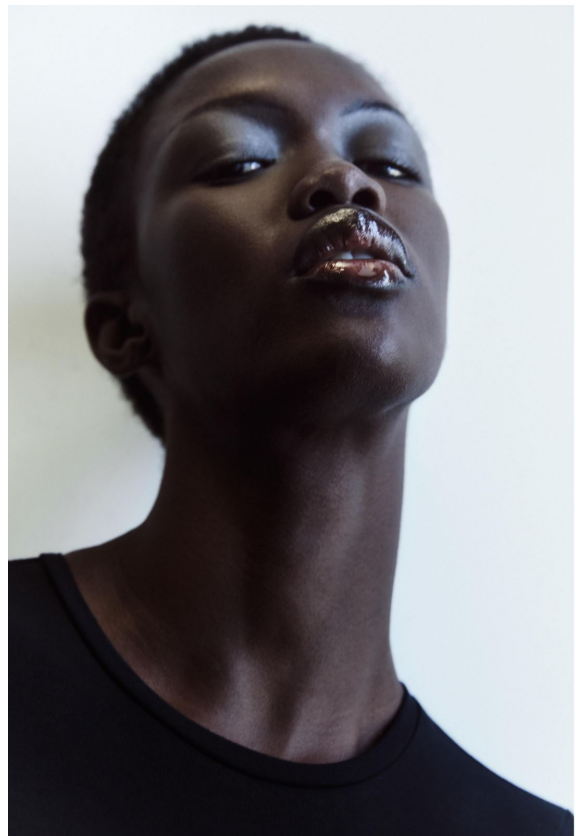
5'11" 1/2 B 34" 1/2 W 24" 1/2 H 36" 1/2 S 9 1/2 HAIR BLACK EYES BROWN



JAS BENCHALL, TOP LA PERLA, SHORTS MOSCHINO, LAARZEN JEFFREY CAMPBELL, OORBEL ISABEL MARANT.



MAKE-UP: PAUL ANDERSON & DOLORESA, AGENCY: WWW.COLOREDPENCILS.COM, MICHELLE ADAMA & BRIDELE, BLOK
WWW.COLOREDPENCILS.COM, ASSISTANT: TETUANO, BRITNEY CHANDLER, KENNA BERTIN, TYCHO ANDERSON, WASH



ADAMA JOBE

5'11" 1/2 B 34" 1/2 W 24" 1/2 H 36" 1/2 S 9 1/2 HAIR BLACK EYES BROWN

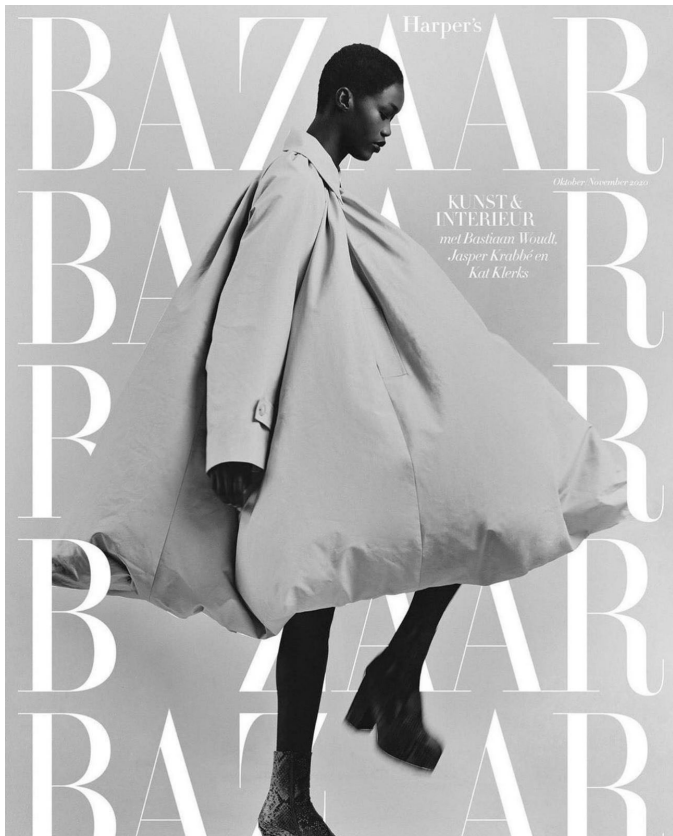
elite



LINKE SEITE: Collier „Pures Glück“ aus Gelbgold mit Brillant-W, von WELLENDORFF, P.a.A. Mini-Kleid aus Viskose-Strick, von TOD'S, um 1100 €. DIESE SEITE: Manschetten-armreif „Coco Crush“ aus Gelbgold, von CHANEL, P.a.A. V-Neck-Pullover aus Schurwolle und Cashmere, von ODEER, um 500 €. Hose aus Denim-Leinen-Mix, von EMPORIO ARMANI, um 490 €. Model: Adama Jobe / Modelwerk. Make-up: Kristina Kullenberg / LundLund. Haare: Philip Fohlin / Linkdetails. Stylingassistentz: Tinke Valerie Knoll. Produktion: DAY Stockholm



LU
JOURNAL
AUTUMN
WINTER
2022
REN



Harper's
BAZAAR
Oktober/November 2022
KUNST & INTERIEUR
mit Bastiaan Woudt,
Jasper Krabbé en
Kat Klerks

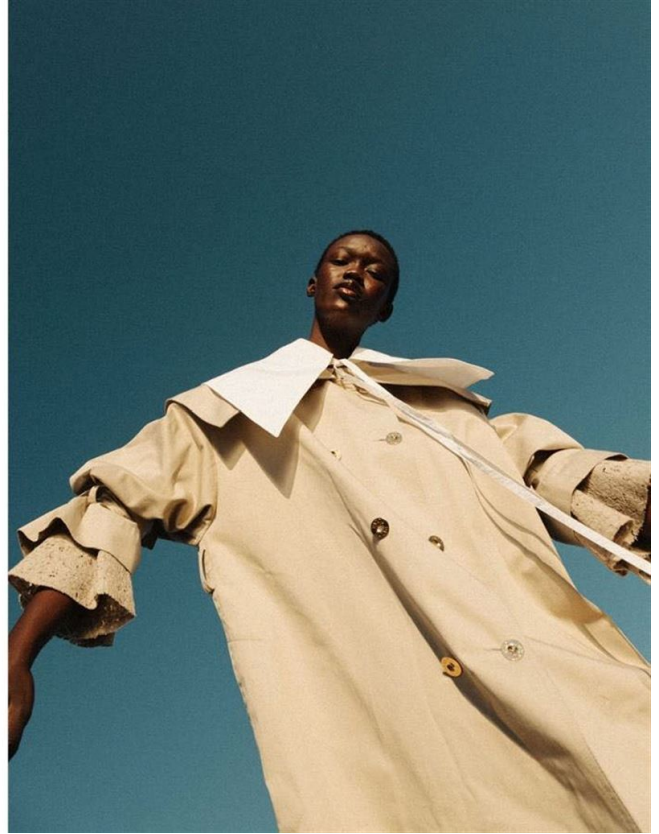


BAZAAR BEAUTY
Flüsterndes von
Linné in rot, für ca.
1000,- €
mit einem € 1500,-
Tasche Marni

ADAMA JOBE

5'11" 1/2 B 34" 1/2 W 24" 1/2 H 36" 1/2 S 9 1/2 HAIR BLACK EYES BROWN

elite



VOGUE



ADAMA JOBE

5'11" 1/2 B 34" 1/2 W 24" 1/2 H 36" 1/2 S 9 1/2 HAIR BLACK EYES BROWN