

elite

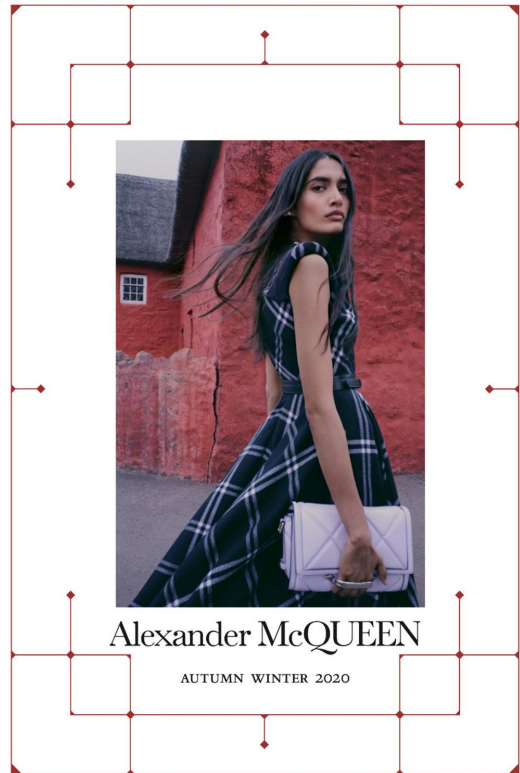


*Manteau maximaliste, veste et pantalons en laine et cachemire, et accessoires de luxe en cuir. Max Mara. Chemise et cravate, Huzhinkamatardindis, Bowles d'oreilles, Monics. Page de gauche, veste et pantalons en fausse, Chloé. Chemise Huzhinkamatardindis, Cravate, Barry Wang. Broche et bagues, Pékéle London. Chapeau, Kyle Ho. Bowles d'oreilles, Monics. Hés et boucle d'oreilles, Lesla. Coiffure Virginie Moreira. Manucure Zaida Igani. Production Art House. Casting Mischa. Nocturn@Living. Accessoires réalisées Felix Parada, Mark Mutyanbazi et Jon-Eric Hegemann.*

AISHWARYA GUPTA

5'11" B 30" 1/2 W 23" 1/2 H 35" S 9 HAIR BROWN EYES BROWN

elite



AISHWARYA GUPTA

5'11" B 30" 1/2 W 23" 1/2 H 35" S 9 HAIR BROWN EYES BROWN

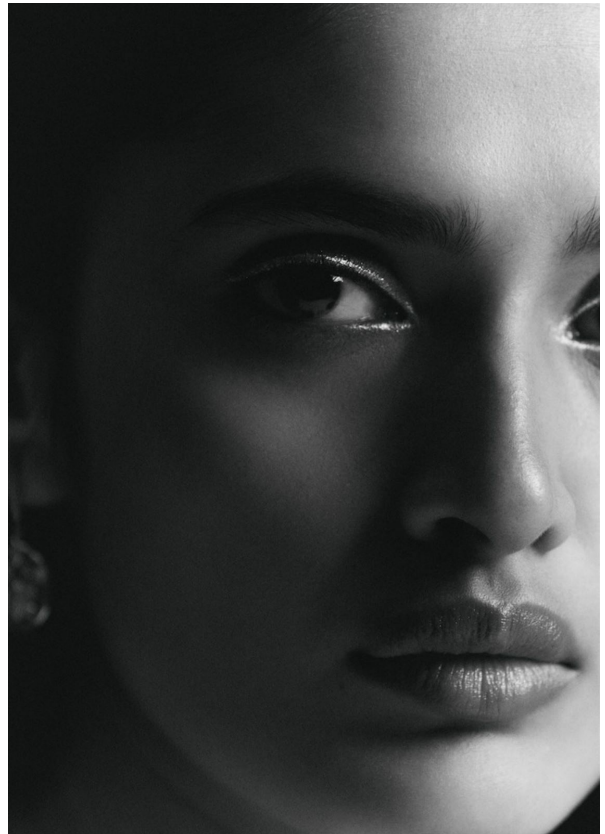
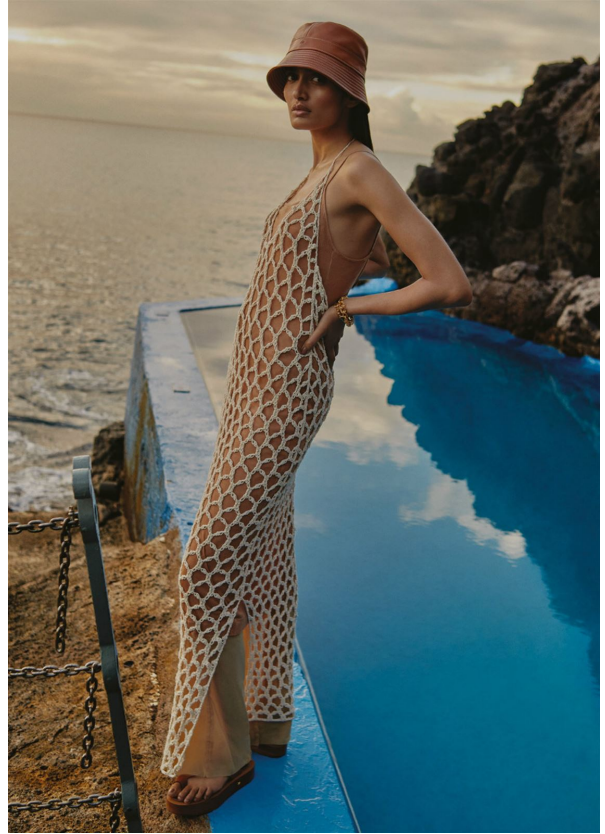
elite



AISHWARYA GUPTA

5'11" B 30" 1/2 W 23" 1/2 H 35" S 9 HAIR BROWN EYES BROWN

elite



AISHWARYA GUPTA

5'11" B 30" 1/2 W 23" 1/2 H 35" S 9 HAIR BROWN EYES BROWN

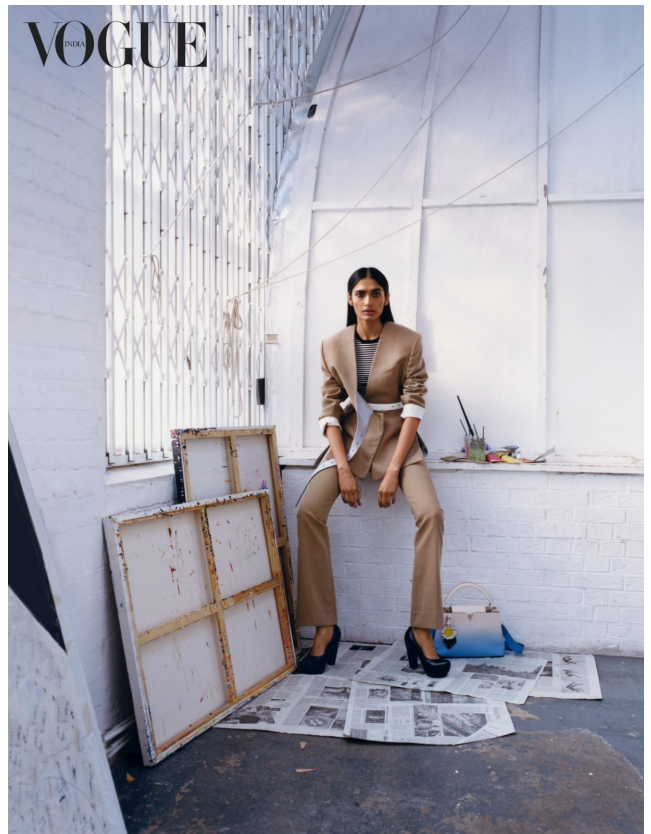
elite



AISHWARYA GUPTA

5'11" B 30" 1/2 W 23" 1/2 H 35" S 9 HAIR BROWN EYES BROWN

elite



AISHWARYA GUPTA

5'11" B 30" 1/2 W 23" 1/2 H 35" S 9 HAIR BROWN EYES BROWN

elite



RICHARD PHIBBS

AISHWARYA GUPTA

5'11" B 30" 1/2 W 23" 1/2 H 35" S 9 HAIR BROWN EYES BROWN

elite



AISHWARYA GUPTA

5'11" B 30" 1/2 W 23" 1/2 H 35" S 9 HAIR BROWN EYES BROWN