

elite



AISHWARYA GUPTA

5'11" B 30" 1/2 W 23" 1/2 H 35" S 9 HAIR BROWN EYES BROWN

elite



AISHWARYA GUPTA

5'11" B 30" 1/2 W 23" 1/2 H 35" S 9 HAIR BROWN EYES BROWN

elite

Manteau masculin, veste et pantalon en laine et cachemire, et escarpins à lacets en cuir, Max Mara. Chemise et cravate, Ibrahimkamarastudios. Boucles d'oreilles, Monies. Page de gauche, veste et pantalon en flanelle, Chloé. Chemise Ibrahimkamarastudios. Cravate, Barry Wang. Broche et bague, Pebble London. Chapeau, Kyle Ho. Boucles d'oreilles, Monies. Mise en beauté Hiromi Ueda. Coiffure Virginie Moreira. Manucure Zaida Igani. Production Art House. Casting Mischa Notcutt@11casting. Assistants réalisation Felix Paradza, Mark Mutyambizi et Jon-Eric Hegemann.



AISHWARYA GUPTA

5'11" B 30" 1/2 W 23" 1/2 H 35" S 9 HAIR BROWN EYES BROWN

elite



AISHWARYA GUPTA

5'11" B 30" 1/2 W 23" 1/2 H 35" S 9 HAIR BROWN EYES BROWN

elite



Alexander McQUEEN

AUTUMN WINTER 2020

AISHWARYA GUPTA

5'11" B 30" 1/2 W 23" 1/2 H 35" S 9 HAIR BROWN EYES BROWN

elite



AISHWARYA GUPTA

5'11" B 30" 1/2 W 23" 1/2 H 35" S 9 HAIR BROWN EYES BROWN

elite



AISHWARYA GUPTA

5'11" B 30" 1/2 W 23" 1/2 H 35" S 9 HAIR BROWN EYES BROWN

elite



AISHWARYA GUPTA

5'11" B 30" 1/2 W 23" 1/2 H 35" S 9 HAIR BROWN EYES BROWN

elite



AISHWARYA GUPTA

5'11" B 30" 1/2 W 23" 1/2 H 35" S 9 HAIR BROWN EYES BROWN

elite



AISHWARYA GUPTA

5'11" B 30" 1/2 W 23" 1/2 H 35" S 9 HAIR BROWN EYES BROWN

elite



AISHWARYA GUPTA

5'11" B 30" 1/2 W 23" 1/2 H 35" S 9 HAIR BROWN EYES BROWN

elite



AISHWARYA GUPTA

5'11" B 30" 1/2 W 23" 1/2 H 35" S 9 HAIR BROWN EYES BROWN

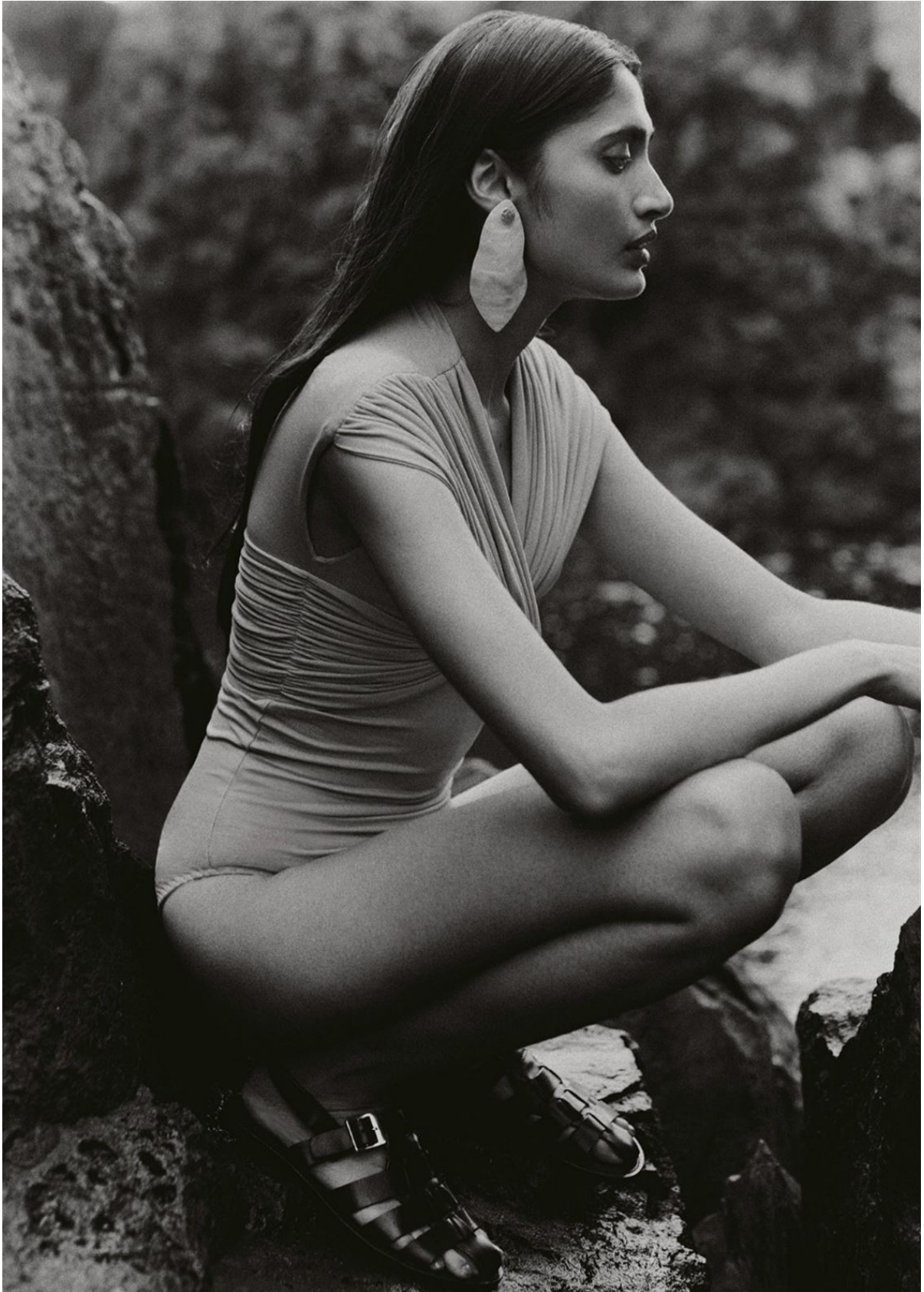
elite



AISHWARYA GUPTA

5'11" B 30" 1/2 W 23" 1/2 H 35" S 9 HAIR BROWN EYES BROWN

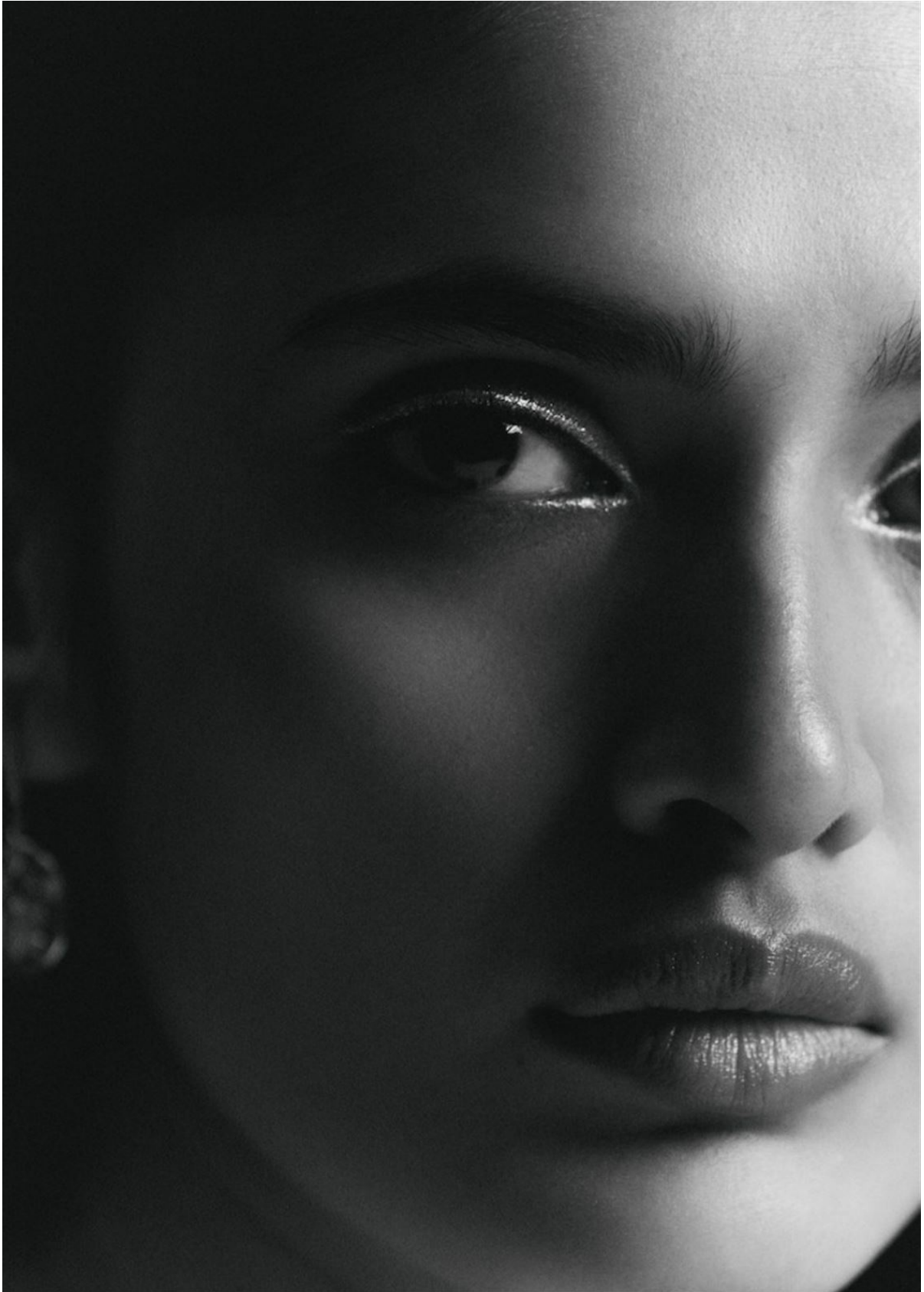
elite



AISHWARYA GUPTA

5'11" B 30" 1/2 W 23" 1/2 H 35" S 9 HAIR BROWN EYES BROWN

elite



AISHWARYA GUPTA

5'11" B 30" 1/2 W 23" 1/2 H 35" S 9 HAIR BROWN EYES BROWN

elite



AISHWARYA GUPTA

5'11" B 30" 1/2 W 23" 1/2 H 35" S 9 HAIR BROWN EYES BROWN

elite



AISHWARYA GUPTA

5'11" B 30" 1/2 W 23" 1/2 H 35" S 9 HAIR BROWN EYES BROWN

elite



AISHWARYA GUPTA

5'11" B 30" 1/2 W 23" 1/2 H 35" S 9 HAIR BROWN EYES BROWN

elite



AISHWARYA GUPTA

5'11" B 30" 1/2 W 23" 1/2 H 35" S 9 HAIR BROWN EYES BROWN

elite



AISHWARYA GUPTA

5'11" B 30" 1/2 W 23" 1/2 H 35" S 9 HAIR BROWN EYES BROWN

elite



AISHWARYA GUPTA

5'11" B 30" 1/2 W 23" 1/2 H 35" S 9 HAIR BROWN EYES BROWN

elite



VOGUE
INDIA

AISHWARYA GUPTA

5'11" B 30" 1/2 W 23" 1/2 H 35" S 9 HAIR BROWN EYES BROWN

elite



AISHWARYA GUPTA

5'11" B 30" 1/2 W 23" 1/2 H 35" S 9 HAIR BROWN EYES BROWN

elite



Knit cardigan, £590; tulle skirt,
£2,800, both Molly Goddard.
Mohair socks, £16, Pairs Scotland.
Leather boots, £355, Grenson

AISHWARYA GUPTA

5'11" B 30" 1/2 W 23" 1/2 H 35" S 9 HAIR BROWN EYES BROWN

elite



RICHARD PHIBBS

AISHWARYA GUPTA

5'11" B 30" 1/2 W 23" 1/2 H 35" S 9 HAIR BROWN EYES BROWN

elite



AISHWARYA GUPTA

5'11" B 30" 1/2 W 23" 1/2 H 35" S 9 HAIR BROWN EYES BROWN

elite



JUNE 2023

BEST OF BRITISH

High fashion at Highgrove, the glories of Glyndebourne and our ultimate Coronation tea

WOMAN ON A MISSION
Vanessa Kirby talks bravery, breaking boundaries and bonding with Tom Cruise

TALK OF THE TON
Golda Rosheuvel and India Amarteifio on being Queen Charlotte

KARMA CHAMELEON
How Kate Moss went from wild child to wellness guru

AISHWARYA GUPTA

5'11" B 30" 1/2 W 23" 1/2 H 35" S 9 HAIR BROWN EYES BROWN