

elite



**ANGELA GARTEN**

5'9" 1/2 B 32" 1/2 W 23" H 34" DRESS 2 S 8 1/2 HAIR DARK BROWN EYES  
BROWN

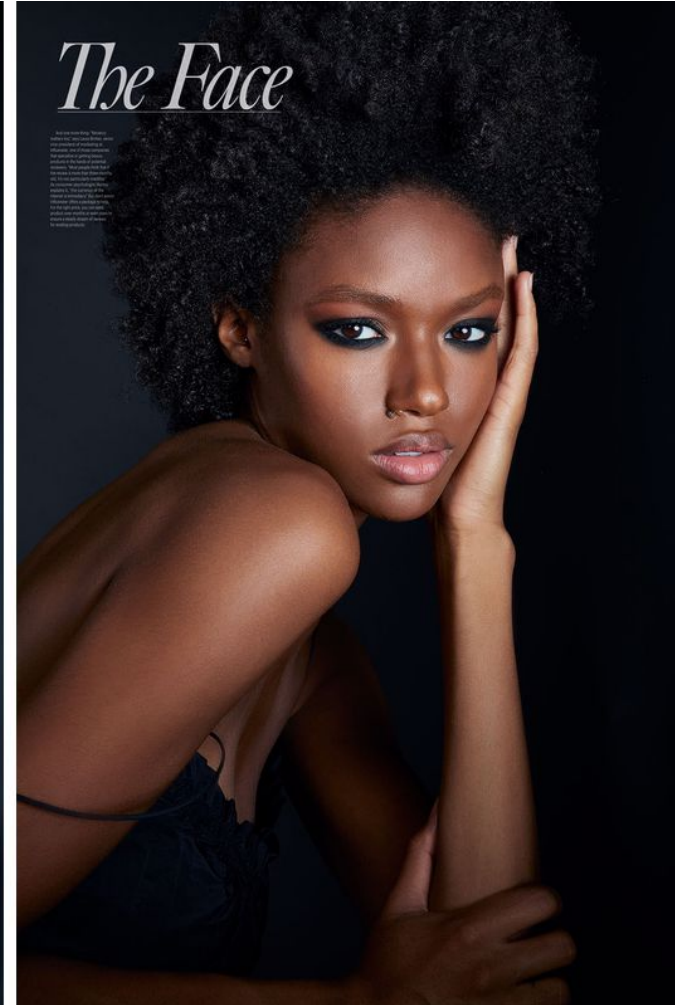
elite



ANGELA GARTEN

5'9" 1/2 B 32" 1/2 W 23" H 34" DRESS 2 S 8 1/2 HAIR DARK BROWN EYES BROWN

elite



ANGELA GARTEN

5'9" 1/2 B 32" 1/2 W 23" H 34" DRESS 2 S 8 1/2 HAIR DARK BROWN EYES BROWN



elite



ANGELA GARTEN

5'9" 1/2 B 32" 1/2 W 23" H 34" DRESS 2 S 8 1/2 HAIR DARK BROWN EYES BROWN

elite



**ANGELA GARTEN**

5'9" 1/2 B 32" 1/2 W 23" H 34" DRESS 2 S 8 1/2 HAIR DARK BROWN EYES  
BROWN

elite



**ANGELA GARTEN**

5'9" 1/2 B 32" 1/2 W 23" H 34" DRESS 2 S 8 1/2 HAIR DARK BROWN EYES  
BROWN



elite



ANGELA GARTEN

5'9" 1/2 B 32" 1/2 W 23" H 34" DRESS 2 S 8 1/2 HAIR DARK BROWN EYES BROWN



elite



ANGELA GARTEN

5'9" 1/2 B 32" 1/2 W 23" H 34" DRESS 2 S 8 1/2 HAIR DARK BROWN EYES BROWN



elite



ANGELA GARTEN

5'9" 1/2 B 32" 1/2 W 23" H 34" DRESS 2 S 8 1/2 HAIR DARK BROWN EYES BROWN

elite

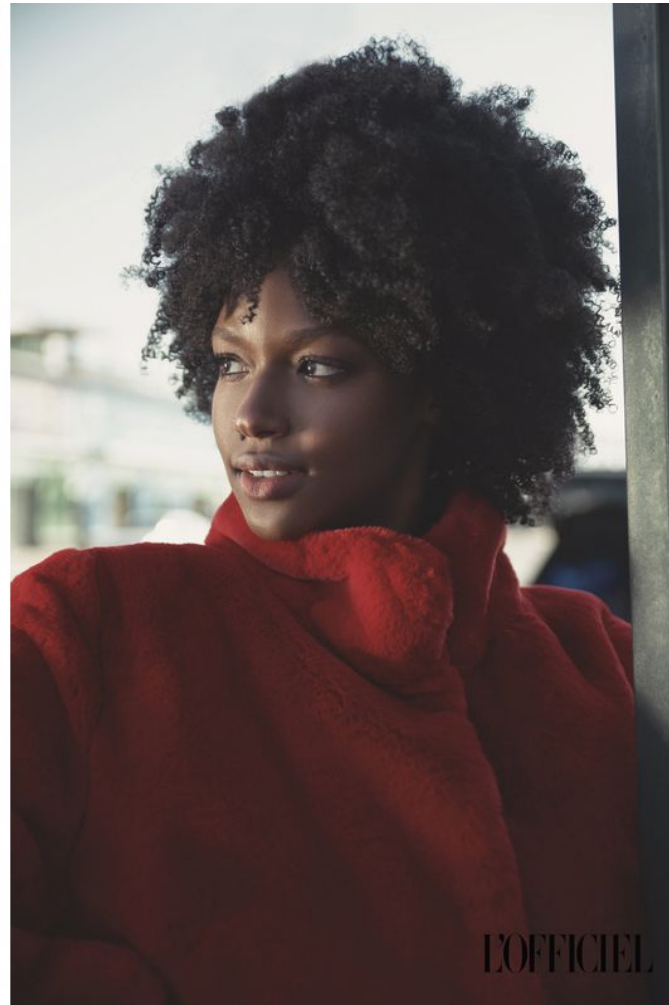


ANGELA GARTEN

5'9" 1/2 B 32" 1/2 W 23" H 34" DRESS 2 S 8 1/2 HAIR DARK BROWN EYES BROWN



elite



ANGELA GARTEN

5'9" 1/2 B 32" 1/2 W 23" H 34" DRESS 2 S 8 1/2 HAIR DARK BROWN EYES BROWN

elite

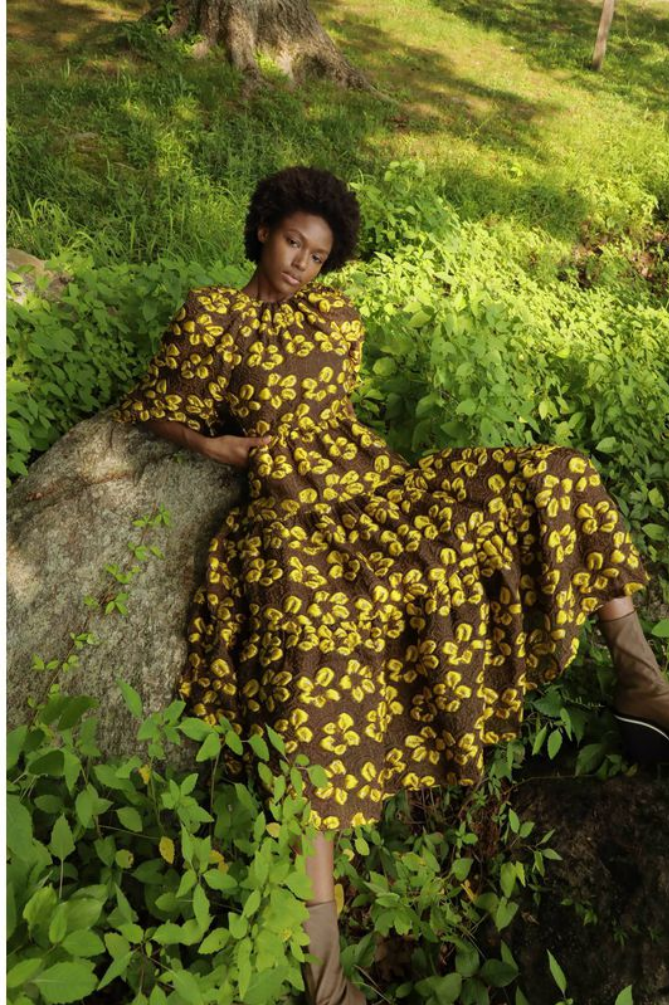


ANGELA GARTEN

5'9" 1/2 B 32" 1/2 W 23" H 34" DRESS 2 S 8 1/2 HAIR DARK BROWN EYES BROWN



elite



ANGELA GARTEN

5'9" 1/2 B 32" 1/2 W 23" H 34" DRESS 2 S 8 1/2 HAIR DARK BROWN EYES BROWN



elite



**ANGELA GARTEN**

5'9" 1/2 B 32" 1/2 W 23" H 34" DRESS 2 S 8 1/2 HAIR DARK BROWN EYES BROWN



elite



ANGELA GARTEN

5'9" 1/2 B 32" 1/2 W 23" H 34" DRESS 2 S 8 1/2 HAIR DARK BROWN EYES BROWN



elite

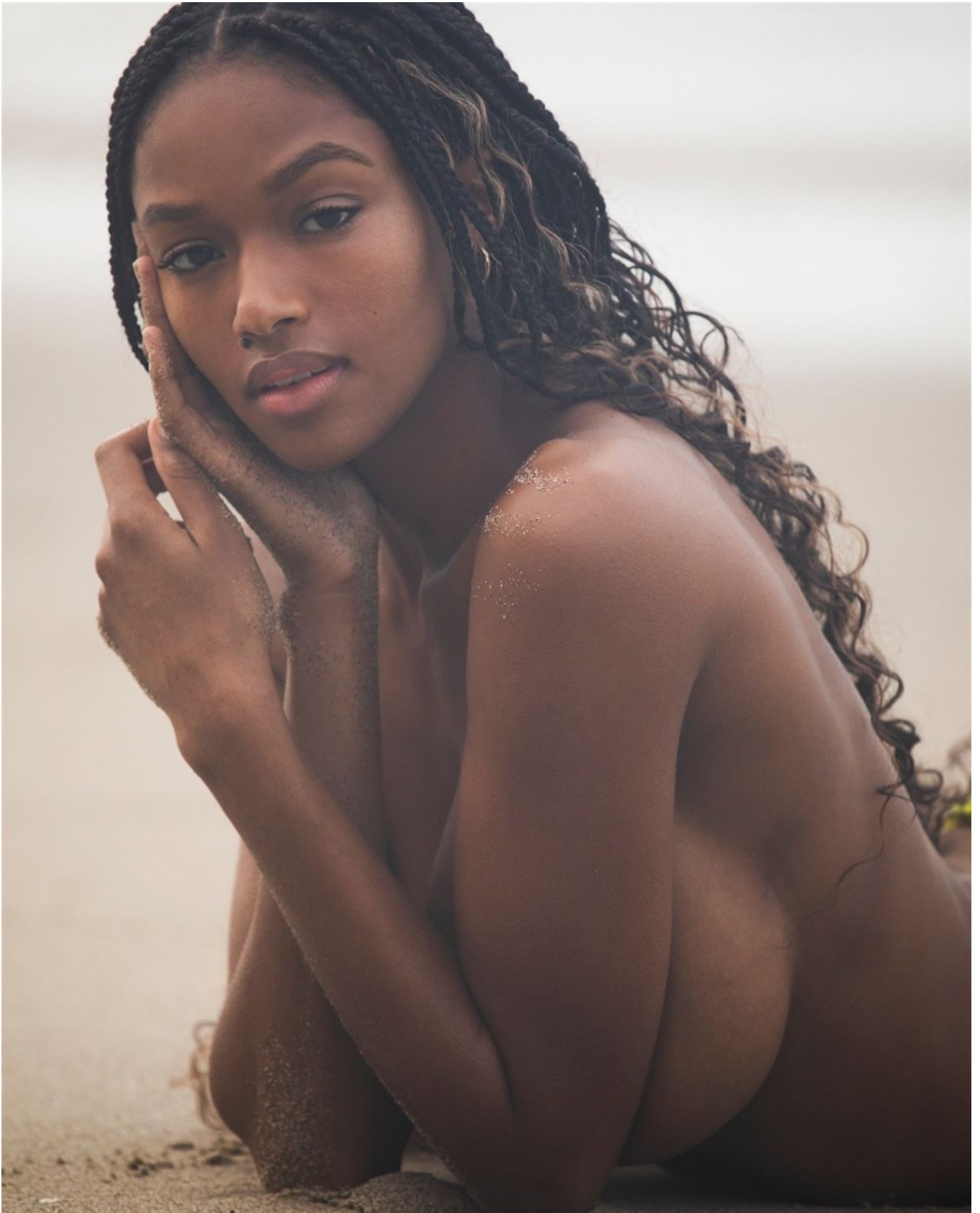


**ANGELA GARTEN**

5'9" 1/2 B 32" 1/2 W 23" H 34" DRESS 2 S 8 1/2 HAIR DARK BROWN EYES  
BROWN



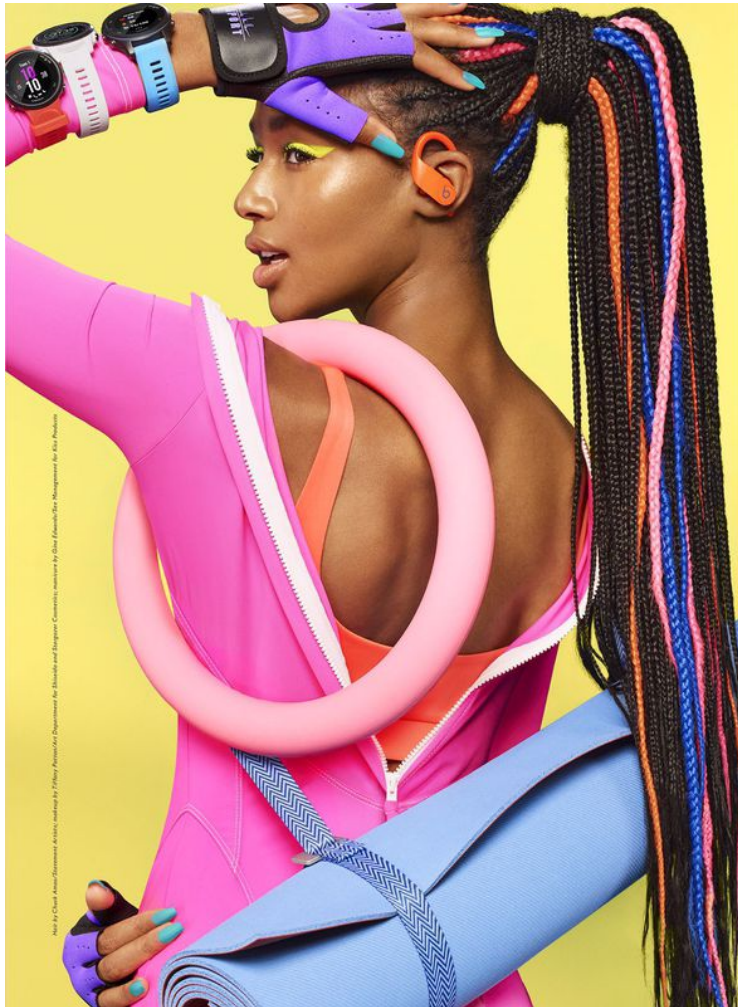
elite



**ANGELA GARTEN**

5'9" 1/2 B 32" 1/2 W 23" H 34" DRESS 2 S 8 1/2 HAIR DARK BROWN EYES  
BROWN

elite



Shot by Chad Aronson/Artonson Agency, modeled by Felicity Pennant/Artonson Agency, hair by Glenn Fawcett/Artonson Agency, makeup by Lisa Anderson/Artonson Agency



Think beyond traditional dumbbells for sculptural toning tools that bring a new balance challenge to reps.

### make a splash

By sea or yoga studio, turn the color wattage way up with eye-catching neons and bold color blocking.

Ansea The Yulex Jane wetsuit (\$230, ansea.co). Jade Swim Apex top (\$90, jadeswim.com). Caraa Sling fanny packs (\$95 each, caraa.com). Westward Leaning Dive G2 and Dive G1 goggles (\$45 each, westwardleaning.com). Blue goggles are stylist's own. Equipit Alps Libre 4.5 lbs. weight (\$129, equipitmovement.com). Tangram Smartrope Rookie jump rope (\$40, tangramfactory.com). Opposite page: **Left On Friday** Double Scoop top (\$85, leftonfriday.com). **Mara Hoffman** Lido Surf suit (\$300, marahoffman.com). **Nicole Miller** Workout gloves (\$18, nicolemiller.com). **Beats by Dr. Dre** Powerbeats Pro earbuds (\$250, apple.com). **Garmin** Forerunner 245 Music white watch (\$350), Forerunner 745 red watch (\$500), and Forerunner 945 blue watch (\$600, garmin.com). **Manduka** Go Move Mat carrier (\$20) and eKO Lite 4 mm yoga mat (\$78, manduka.com).

102

## ANGELA GARTEN

5'9" 1/2 B 32" 1/2 W 23" H 34" DRESS 2 S 8 1/2 HAIR DARK BROWN EYES BROWN





ANGELA GARTEN

5'9" 1/2 B 32" 1/2 W 23" H 34" DRESS 2 S 8 1/2 HAIR DARK BROWN EYES BROWN

elite



ANGELA GARTEN

5'9" 1/2 B 32" 1/2 W 23" H 34" DRESS 2 S 8 1/2 HAIR DARK BROWN EYES BROWN



elite



ANGELA GARTEN

5'9" 1/2 B 32" 1/2 W 23" H 34" DRESS 2 S 8 1/2 HAIR DARK BROWN EYES BROWN