

elite



ADAMA JOBE

6' B 32B W 24" H 35" S 9 1/2 HAIR BLACK EYES BROWN

elite



ADAMA JOBE

6' B 32B W 24" H 35" S 9 1/2 HAIR BLACK EYES BROWN

elite



ADAMA JOBE

6' B 32B W 24" H 35" S 9 1/2 HAIR BLACK EYES BROWN

elite



ADAMA JOBE

6' B 32B W 24" H 35" S 9 1/2 HAIR BLACK EYES BROWN

elite



ADAMA JOBE

6' B 32B W 24" H 35" S 9 1/2 HAIR BLACK EYES BROWN

elite



ADAMA JOBE

6' B 32B W 24" H 35" S 9 1/2 HAIR BLACK EYES BROWN

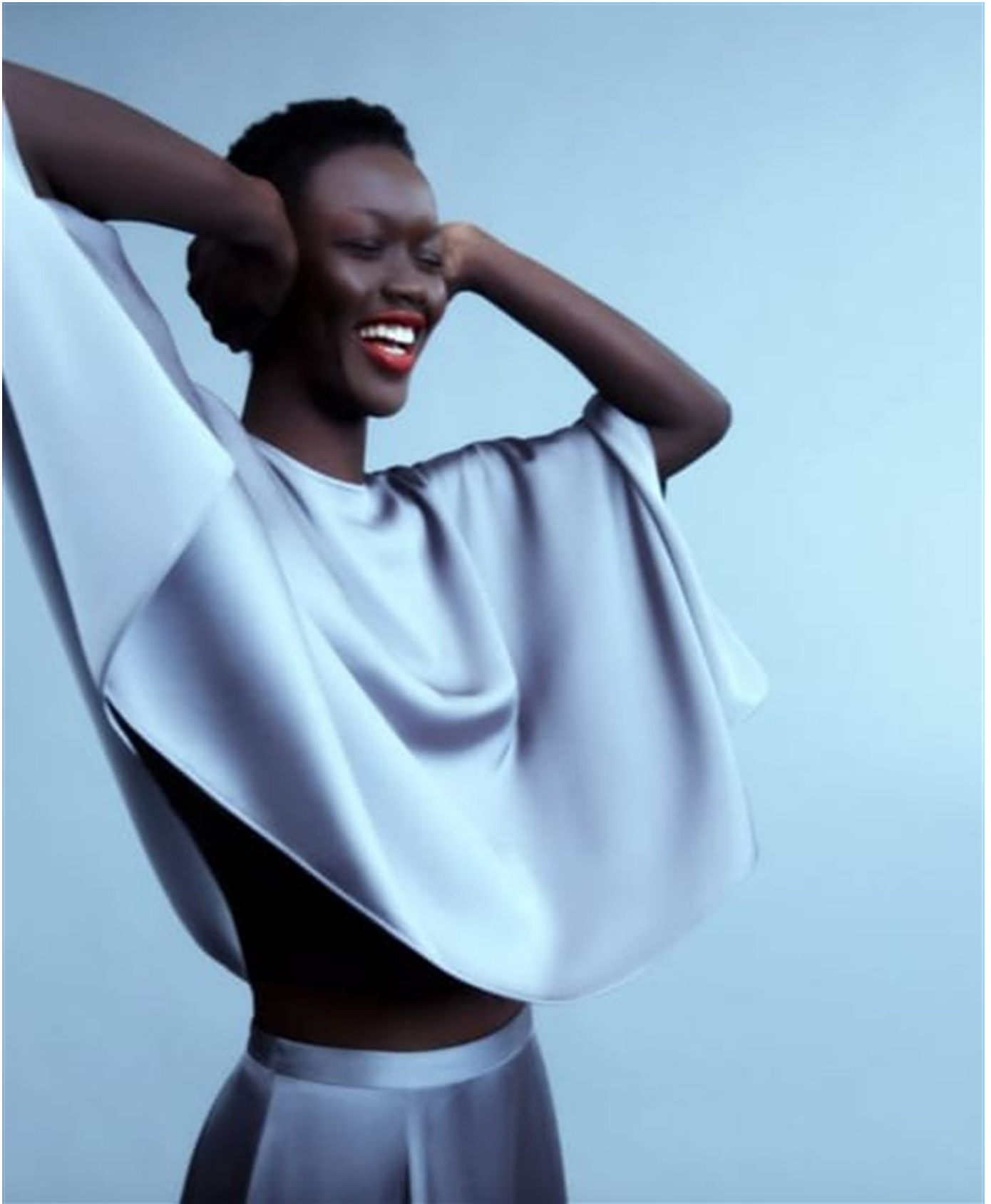
elite



ADAMA JOBE

6' B 32B W 24" H 35" S 9 1/2 HAIR BLACK EYES BROWN

elite



ADAMA JOBE

6' B 32B W 24" H 35" S 9 1/2 HAIR BLACK EYES BROWN

elite



ADAMA JOBE

6' B 32B W 24" H 35" S 9 1/2 HAIR BLACK EYES BROWN

elite



ADAMA JOBE

6' B 32B W 24" H 35" S 9 1/2 HAIR BLACK EYES BROWN

elite



ADAMA JOBE

6' B 32B W 24" H 35" S 9 1/2 HAIR BLACK EYES BROWN

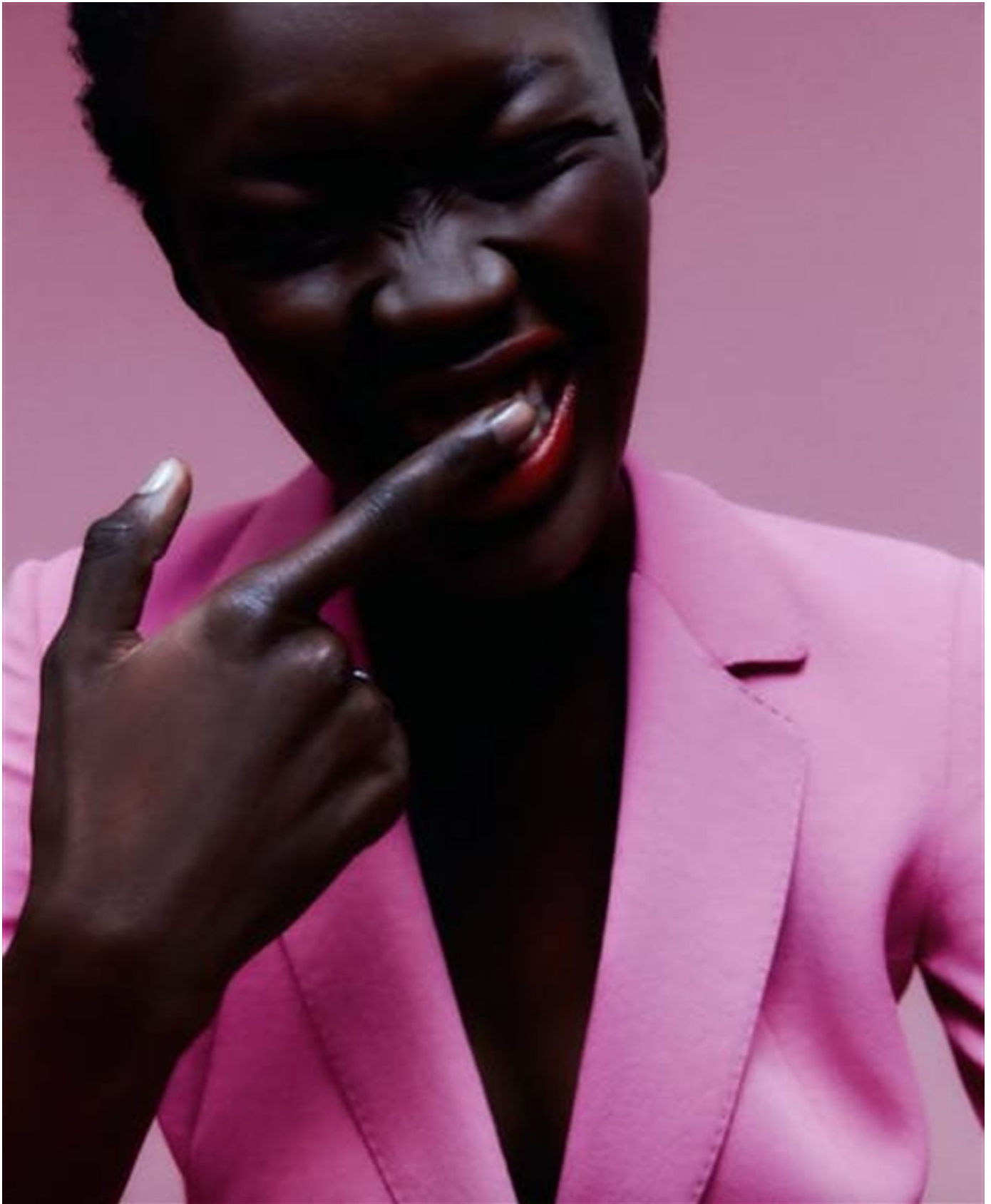
elite



ADAMA JOBE

6' B 32B W 24" H 35" S 9 1/2 HAIR BLACK EYES BROWN

elite



ADAMA JOBE

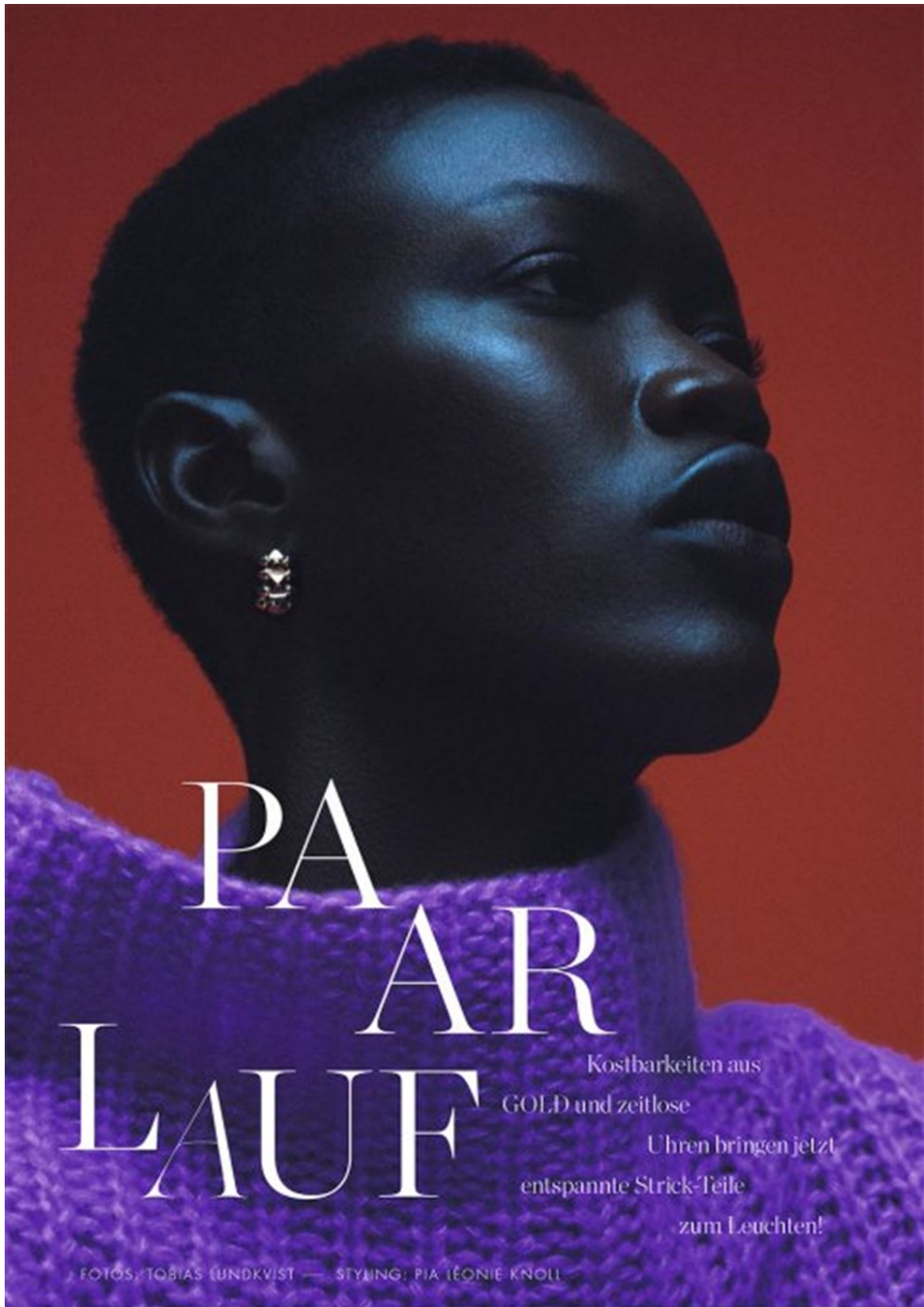
6' B 32B W 24" H 35" S 9 1/2 HAIR BLACK EYES BROWN

elite



ADAMA JOBE

6' B 32B W 24" H 35" S 9 1/2 HAIR BLACK EYES BROWN



PAAR LAUF

Kostbarkeiten aus
GOLD und zeitlose
Uhren bringen jetzt
entspannte Strick-Teile
zum Leuchten!

FOTOS: TOBIAS LUNDKVIST — STYLING: PIA LÉONIE KNOLL

ADAMA JOBE

6' B 32B W 24" H 35" S 9 1/2 HAIR BLACK EYES BROWN

LINKE SEITE: Einzelner „Clash de Cartier“-Ohrring aus Roségold, von CARTIER, um 2700 €. Weiter Rollkragenpullover aus leichtem Cashmeremix, von LU REN, um 410 €. DIESE SEITE: Weißgoldring „Curriculum Vitae“ mit Diamanten im Prinzess-Schliff, von TAMARA COMOLLI, P.a.A. Fransenponcho und passende Strickhose aus Cashmere, von IRIS VON ARNIM, um 1295 € und 895 €



ADAMA JOBE

6' B 32B W 24" H 35" S 9 1/2 HAIR BLACK EYES BROWN



DIESE SEITE: Armbanduhr „Oyster Perpetual Datejust 36“ aus Edelstahl und Weißgold, am Jubilee-Band, von ROLEX, um 8150 €. V-Neck-Pullover aus Cashmere, von CELINE BY HEDI SLIMANE, um 990 €. RECHTE SEITE: Gelbgold-ohrhänger „Tiffany Hardware“, um 6050 €. Zweireihiger Gelbgoldarmreif „Tiffany Knot“, um 7800 €. Beides von TIFFANY & CO. Pullover aus Schottlandwolle, um 1500 €. Satinrock um 1400 €. Beides von PRADA. Creepers: Roger Vivier

ADAMA JOBE

6' B 32B W 24" H 35" S 9 1/2 HAIR BLACK EYES BROWN

DIESE SEITE: Armbanduhr „DeVilLe Trésor“ aus Edelstahl, mit diamantbesetzter Lünelle, von OMEGA, um 5300 €. Strickkleid mit tiefem V-Ausschnitt und aufgesetzten Taschen, von LA PERLA, P. o. A. Creepers: Roger Vivier. RECHTE SEITE: Gelbgoldkette „B.Zero1“ mit Diamantpavé, von BULGARI, um 6900 €. Rückenfreier Pullover „Philine“ aus Cashmere, von ANTONIA ZANDER, um 750 €



ADAMA JOBE

6' B 32B W 24" H 35" S 9 1/2 HAIR BLACK EYES BROWN

elite



ADAMA JOBE

6' B 32B W 24" H 35" S 9 1/2 HAIR BLACK EYES BROWN

elite



ADAMA JOBE

6' B 32B W 24" H 35" S 9 1/2 HAIR BLACK EYES BROWN

elite



ADAMA JOBE

6' B 32B W 24" H 35" S 9 1/2 HAIR BLACK EYES BROWN

elite



ADAMA JOBE

6' B 32B W 24" H 35" S 9 1/2 HAIR BLACK EYES BROWN

elite



ADAMA JOBE

6' B 32B W 24" H 35" S 9 1/2 HAIR BLACK EYES BROWN

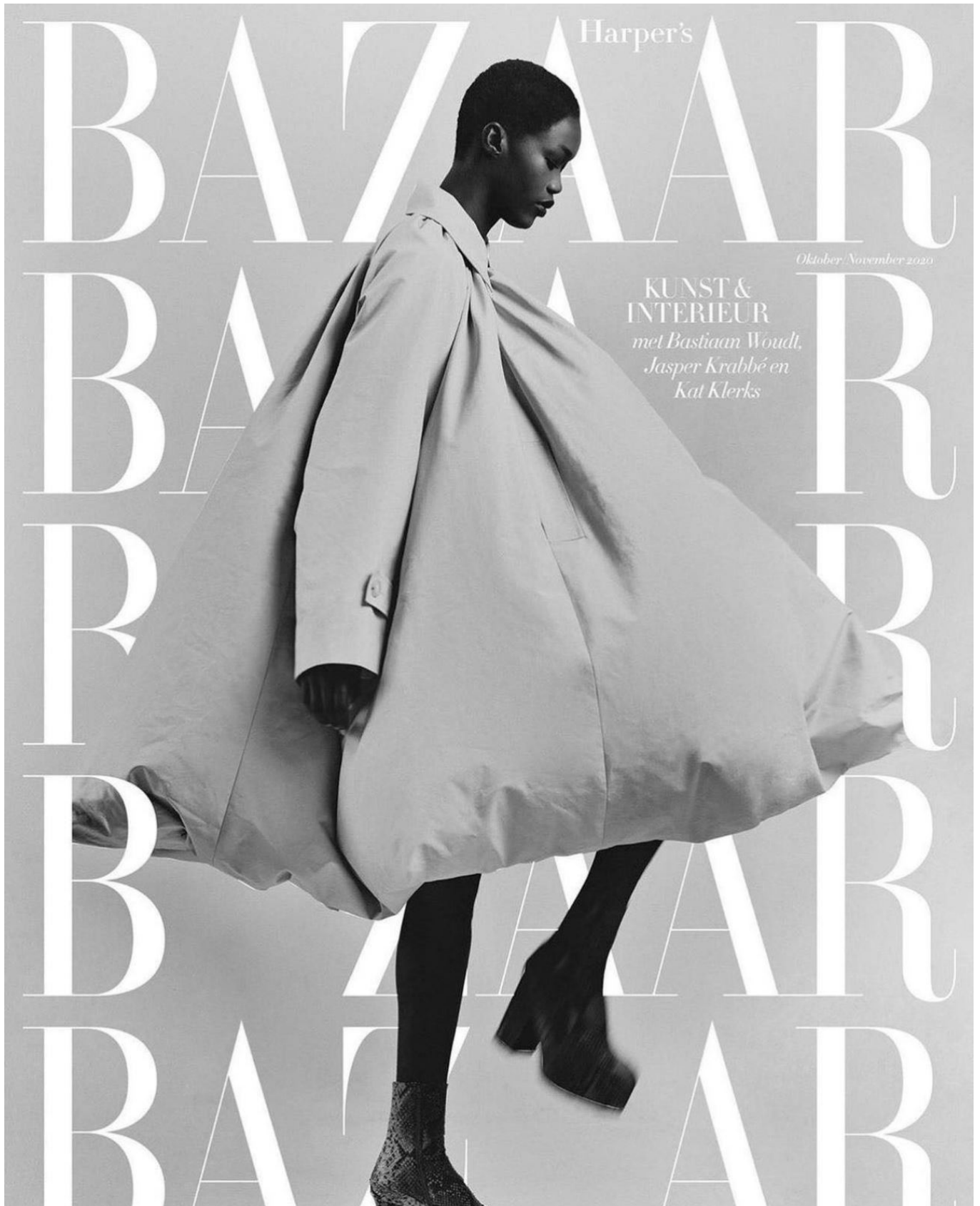
elite



ADAMA JOBE

6' B 32B W 24" H 35" S 9 1/2 HAIR BLACK EYES BROWN

elite



ADAMA JOBE

6' B 32B W 24" H 35" S 9 1/2 HAIR BLACK EYES BROWN

elite



ADAMA JOBE

6' B 32B W 24" H 35" S 9 1/2 HAIR BLACK EYES BROWN

elite

VOGUE



ADAMA JOBE

6' B 32B W 24" H 35" S 9 1/2 HAIR BLACK EYES BROWN

elite

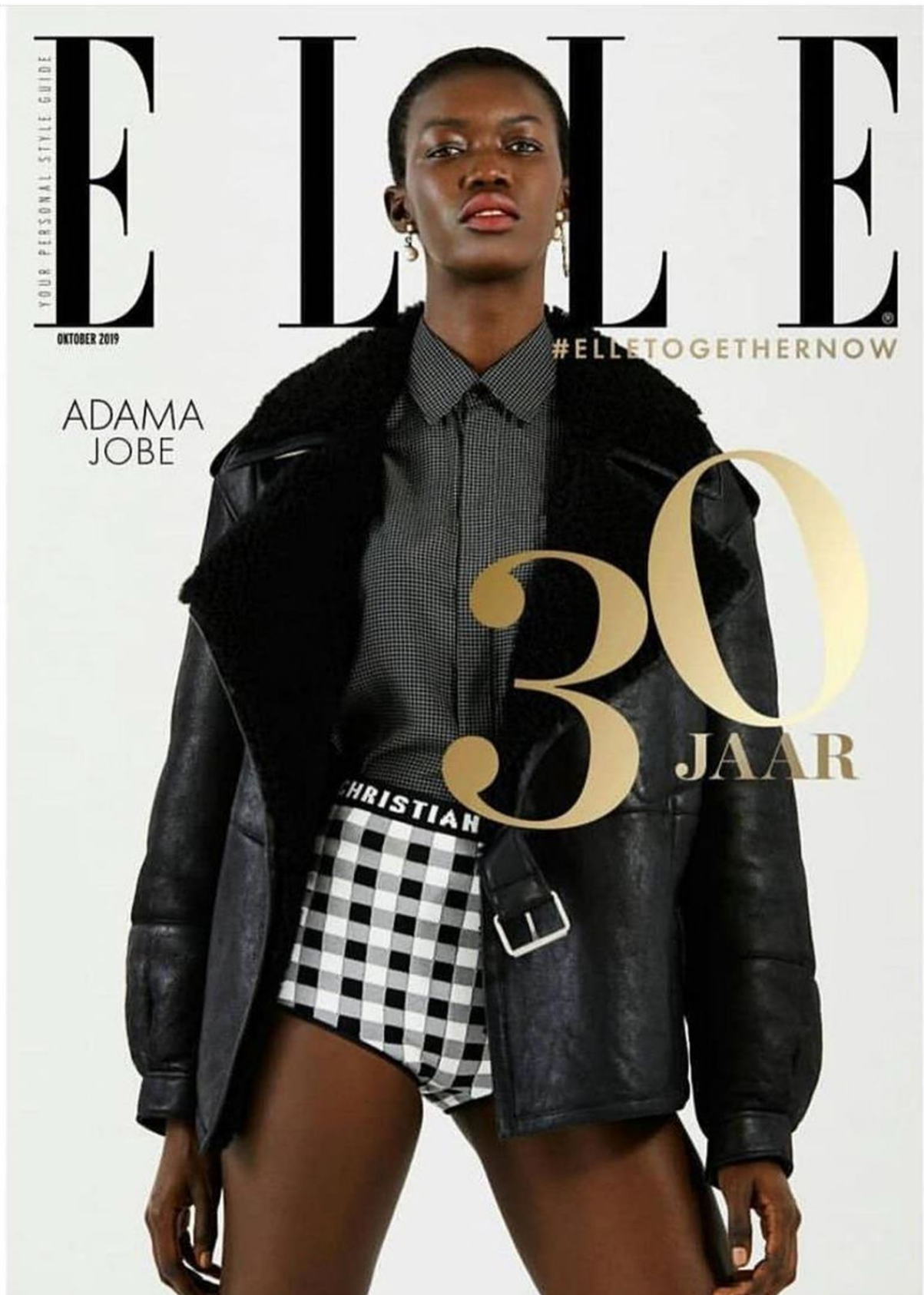
VOGUE



ADAMA JOBE

6' B 32B W 24" H 35" S 9 1/2 HAIR BLACK EYES BROWN

elite



ADAMA JOBE

6' B 32B W 24" H 35" S 9 1/2 HAIR BLACK EYES BROWN

elite



ADAMA JOBE

6' B 32B W 24" H 35" S 9 1/2 HAIR BLACK EYES BROWN

elite



ADAMA JOBE

6' B 32B W 24" H 35" S 9 1/2 HAIR BLACK EYES BROWN



←
Grofgebreide trui van
polyester en katoen
Marc Cain, tas van leer
Danse Lente

→
De gecropte boxy jas met
applicatie, het collegejasje
met strepen en de coltrui,
wollen plissérok en leren
pumps zijn van *Calvin Klein*
205W39NYC dat onder
leiding van ontwerper
Raf Simons staat. Hij is een
meester in *layering* en
nieuwe interpretaties van
klassieke kledingstukken

ADAMA JOBE

6' B 32B W 24" H 35" S 9 1/2 HAIR BLACK EYES BROWN

elite



Knack

weekend

**MOET IK HIER
AAN ALLES
DENKEN?**
*De vrouw als
gezinsmanager*

**GOING TO SAN
FRANCISCO**
*Zoveel meer dan
de Golden Gate*

SPECIAL
ACCESSOIRES

**VERKLEDEN VOOR
GEVORDERDEN**
*'Ik voel me goed
als prinses Elsa'*

WWW.KNACKWEEKEND.BE - HOORT BIJ HET WEDDGLAD KNACK EN FNACK FOCUS NL 10 VAN 6 TOT 12 MAART 2019 - ISSN 0772294X

ADAMA JOBE

6' B 32B W 24" H 35" S 9 1/2 HAIR BLACK EYES BROWN

elite



ADAMA JOBE

6' B 32B W 24" H 35" S 9 1/2 HAIR BLACK EYES BROWN

elite



RODE JAS FRENKEN, GROENE
JAS LIU JO, TOP EN LEGGING
ELISABETTA FRANCHI,
SCHOENEN DR. MARTENS,
SOKKEN ADIDAS, SJAAL,
HANDSCHOENEN EN RIEM
VAN STYLIST.

ADAMA JOBE

6' B 32B W 24" H 35" S 9 1/2 HAIR BLACK EYES BROWN

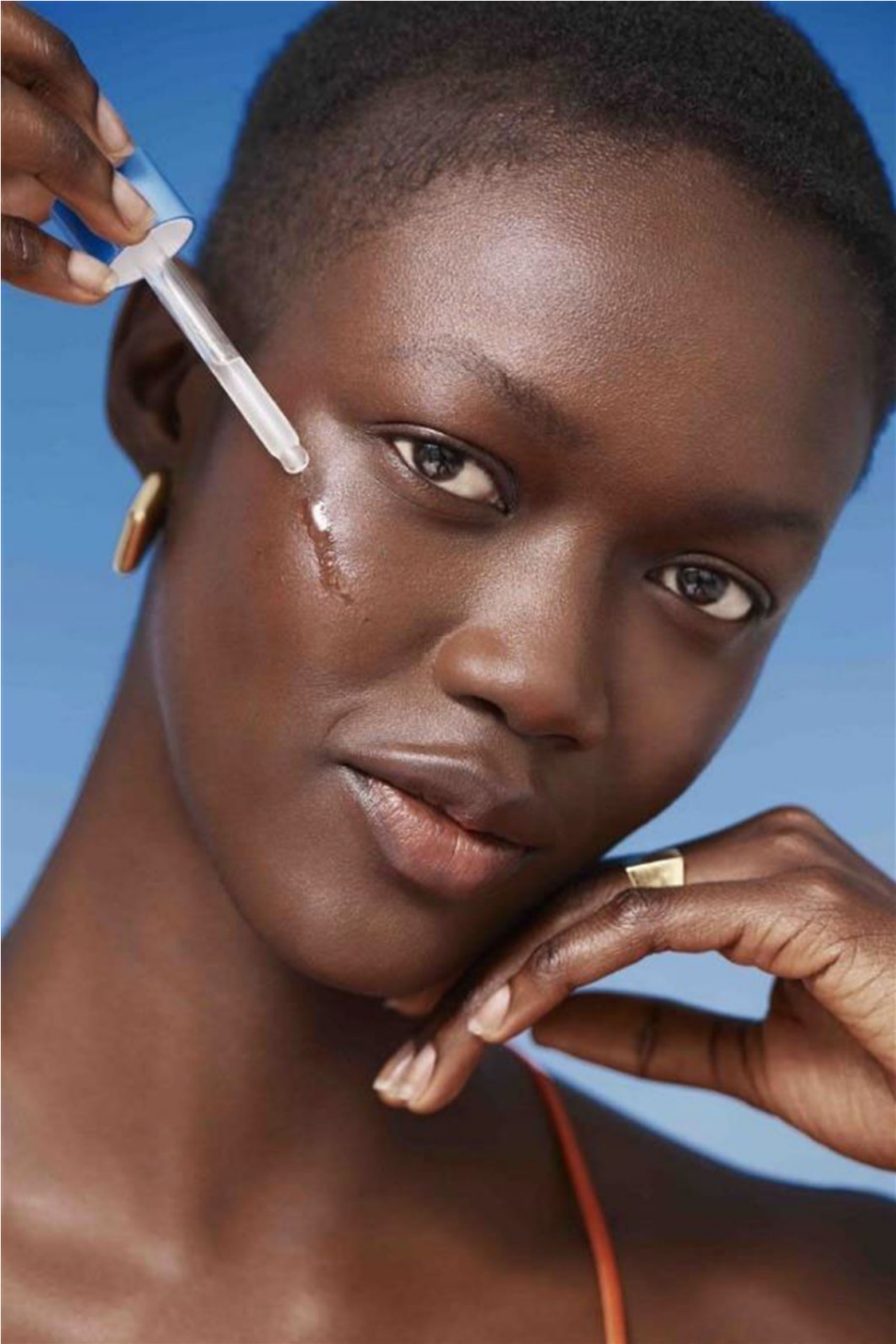


JAS PATRIZIA
PEPE, TRUI
ELISABETTA
FRANCHI,
ZONNEBRIIL
BALENCIAGA.

MAKE-UP: RAURAGHOSING@COLOURFOOL.AGENCY (COLOURFOOL.AGENCY.NL) | MODEL: ADAMA@MODELSROCK (MODELSROCK.AGENCY.COM) | ASS. MO:DE BRITNEY CHANDREPERKASH@BRITNEYCHANDREPERKASH

ADAMA JOBE
6' B 32B W 24" H 35" S 9 1/2 HAIR BLACK EYES BROWN

elite



ADAMA JOBE

6' B 32B W 24" H 35" S 9 1/2 HAIR BLACK EYES BROWN

elite



ADAMA JOBE

6' B 32B W 24" H 35" S 9 1/2 HAIR BLACK EYES BROWN

JAS BENCHELLAL, TOP LA PERLA, SHORTS MOSCHINO, LAARZEN JEFFREY CAMPBELL, OORBEL ISABEL MARANT.



MAKE UP: RAJ PRAKHOSING @ COLOURFOOL AGENCY WWW.COLOURFOOL.AGENCY.NL MODEL: ADAMA @ MODELSPOCK
WWW.MODELSPOCK.AGENCY.COM ASSISTANT STYLING: BRITNEY CHANDRERKASH @ BRITNEYCHANDRERKASH

ADAMA JOBE
6' B 32B W 24" H 35" S 9 1/2 HAIR BLACK EYES BROWN

elite



ADAMA JOBE

6' B 32B W 24" H 35" S 9 1/2 HAIR BLACK EYES BROWN

elite



ADAMA JOBE

6' B 32B W 24" H 35" S 9 1/2 HAIR BLACK EYES BROWN

elite



ADAMA JOBE

6' B 32B W 24" H 35" S 9 1/2 HAIR BLACK EYES BROWN

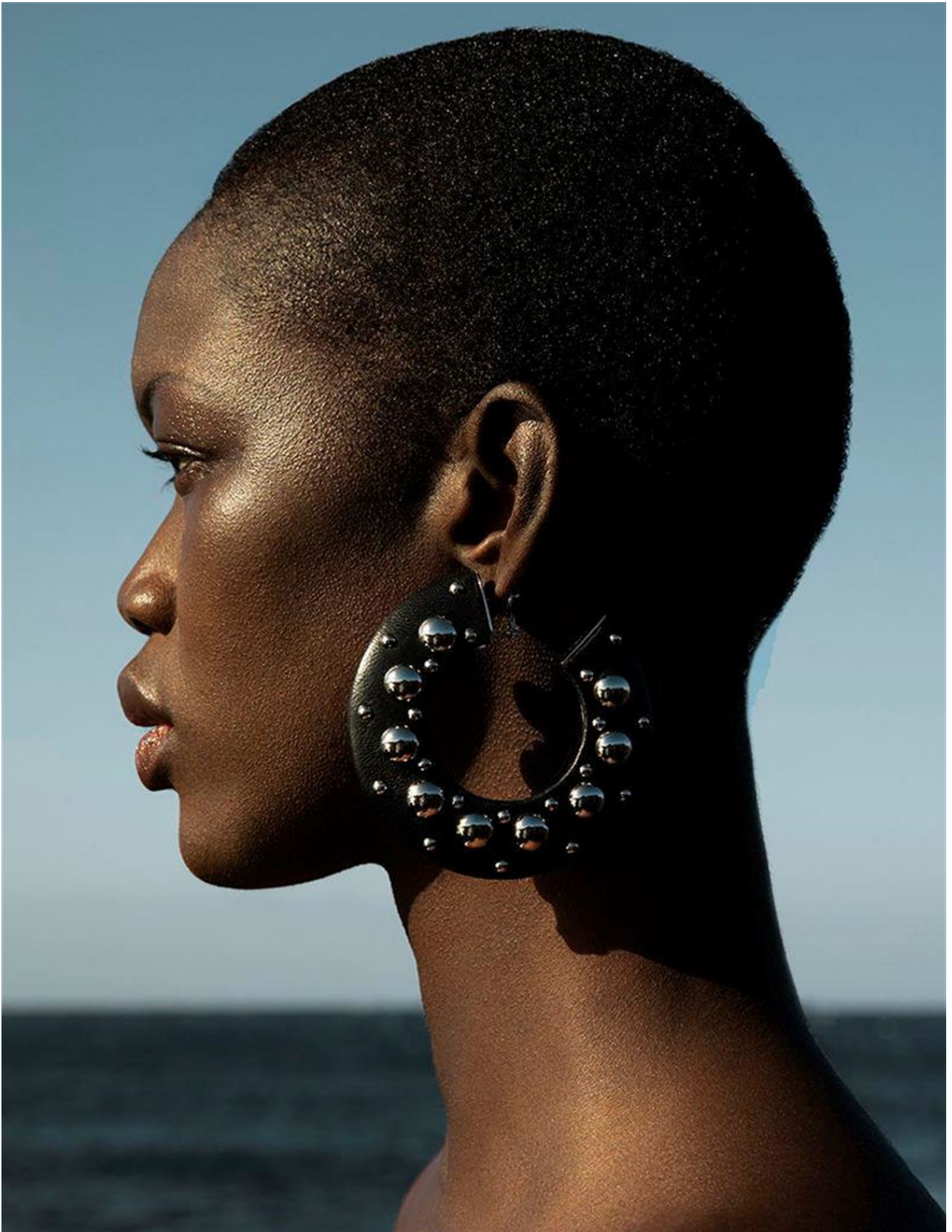
elite



ADAMA JOBE

6' B 32B W 24" H 35" S 9 1/2 HAIR BLACK EYES BROWN

elite



ADAMA JOBE

6' B 32B W 24" H 35" S 9 1/2 HAIR BLACK EYES BROWN